

## REFRIGERANTS -12, -22, -502 AND -717

*CRANKCASE PRESSURE  
EQ VALVE  
368-09544*

**BARE COMPRESSOR —**  
LESS MANIFOLDS, SUCTION ELBOW  
AND EXTERNAL INTERSTAGE PIPING

UNIT MODEL	NUMBER CYLINDERS	YORK PART NUMBER
G63CH-12,-22	6	364-24760
G83CH-12,-22	8	364-24763
G123CH-12,-22	12	364-24766
G163CH-12,-22	16	364-24769
G63CF-502	6	364-26344
G83CF-502	8	364-26345
G123CF-502	12	364-26346
G163CF-502	16	364-26347
G63CG-717	6	364-24761
G83CG-717	8	364-24764
G123CG-717	12	364-24767
G163CG-717	16	364-24770

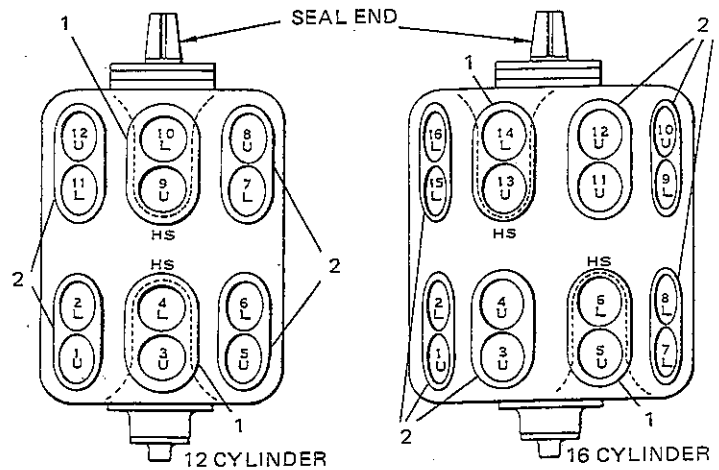
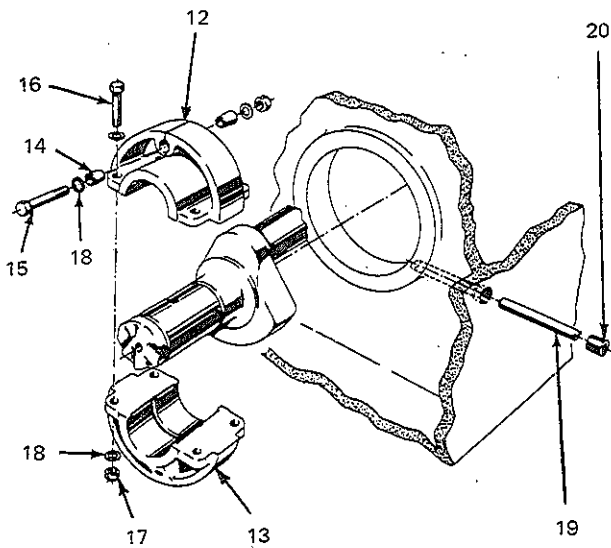
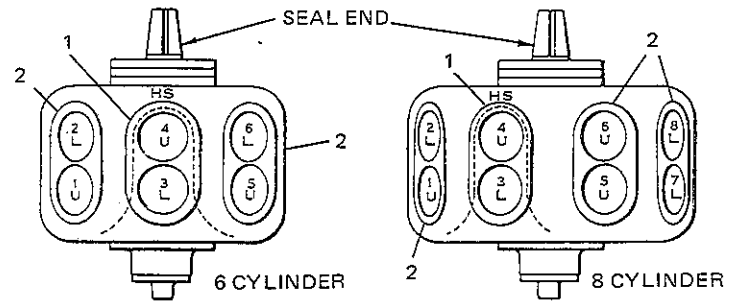
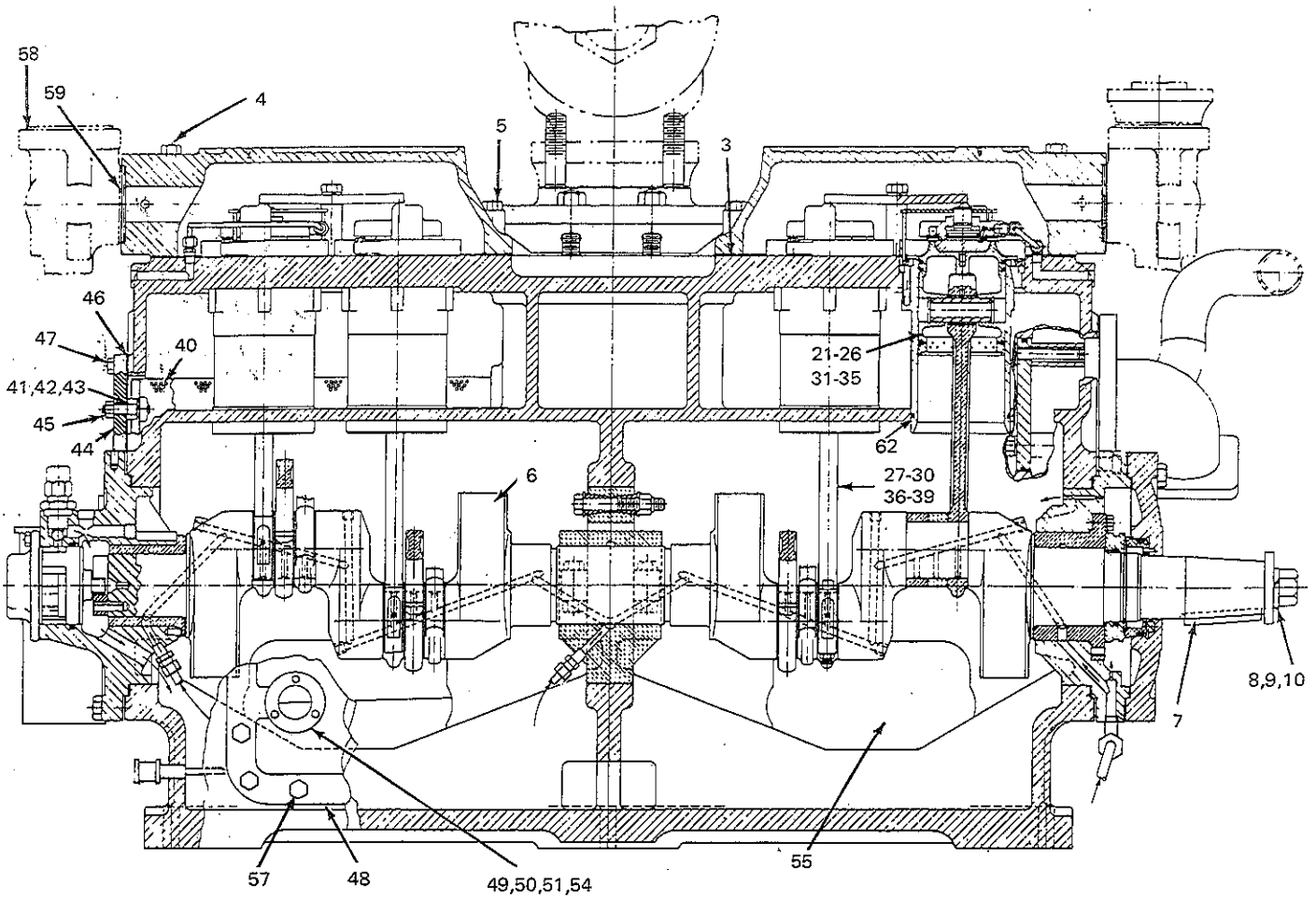
### COMPRESSOR GASKETS — COMPLETE SET REFRIGERANTS—12, -22, -502 AND -717

NO. CYL.	YORK PART NO.
6	364-24999
8	364-25000
12	364-25001
16	364-25002

FUNNEL RING-FOR COMPRESSION OF PISTON RINGS WHEN  
INSTALLING PISTON ..... 064-00240

CRANKCASE FLOAT ..... 364-44720

Earliest design GC compressors did not have the crankcase equalized to suction pressure. Many of these compressors have since been field modified to equalize the crankcase to suction pressure. Compressors manufactured after Feb., 1972 have the crankcase equalized to suction pressure. This Renewal Parts manual lists the available parts for all GC compressors.



L = FULLY LOADED CYLINDERS  
 U = UNLOADING TYPE CYLINDERS (THERE ARE NO HIGH STAGE UNLOADING CYLINDERS ON R-502 COMPRESSORS)  
 HS = HIGH STAGE CYLINDERS - ALL OTHERS LOW STAGE

TABLE 1 — COMPRESSOR CROSS SECTION

ITEM NO.	DESCRIPTION	PART NO.			
		6 CYL	8 CYL	12 CYL	16 CYL
1	Head, Compressor	064-19829 (1 Req'd)	064-19829 (1 Req'd)	064-19829 (2 Req'd)	064-19829 (2 Req'd)
2	Head, Compressor	064-19734 (2 Req'd)	064-19734 (3 Req'd)	064-19734 (4 Req'd)	064-19734 (6 Req'd)
3	Gasket, Top Head	064-19810 (3 Req'd)	064-19810 (4 Req'd)	064-19810 (6 Req'd)	064-19810 (8 Req'd)
4	Screw, Top Head, 1/2" x 3"	021-08898	021-08898	021-08898	021-08898
5	Screw, Top Head, 1/2" x 2-1/2"	021-01589	021-01589	021-01589	021-01589
6	Crankshaft	364-00311	364-00310	364-00309	364-00308
7	Key, Crankshaft	064-00314	064-00314	064-00314	064-00314
8	Screw, Crankshaft	021-01628	021-01628	021-01628	021-01628
9	Lockwasher, Crankshaft	021-05295	021-05295	021-05295	021-05295
10	Washer, Coupling	364-28926	364-28926	364-28926	364-28926
11	Center Main Bearing Assembly Includes items 12-18	-----	-----	364-00317	364-00317
12	Bearing, Upper Half	-----	-----	064-00318	064-00318
13	Bearing, Lower Half	-----	-----	064-00319	064-00319
14	Tapered Bushing	-----	-----	064-00320	064-00320
15	Cap Screw (Bearing Expanding) 1/2" x 3-1/2"	-----	-----	021-01598	021-01598
16	Bolt, Bearing (4 Req'd)	-----	-----	021-14780	021-14780
17	Nut, Locking (5 Req'd)	-----	-----	021-13257	021-13257
18	Washer, Plain (10 Req'd)	-----	-----	021-05155	021-05155
19	Pin, Bearing Locking	-----	-----	064-00322	064-00322
20	Plug, Pipe	-----	-----	023-01983	023-01983
21	Low Stage Piston Assembly <sup>1</sup> (Used in Cylinders No.) Includes items 22-26	364-00364 1,2,5,6	364-00364 1,2,5,6,7,8	364-00364 1,2,5,6,7,8,11,12	364-00364 1,2,3,4,7,8,9,10,11,12,15,16
22	Piston	064-00360	064-00360	064-00360	064-00360
23	Ring, Piston, Plain (2 Req'd/Piston)	029-03669	029-03669	029-03669	029-03669
24	Ring, Piston, Oil	029-04452	029-04452	029-04452	029-04452
25	Pin, Piston	029-01507	029-01507	029-01507	029-01507
26	Spring, Piston Pin Locking (2 Req'd/Piston)	029-00274	029-00274	029-00274	029-00274
27	Low Stage Connecting Rod <sup>1</sup>	364-09881	364-09881	364-09881	364-09881
28	Bolt, Connecting Rod	064-39506	064-39506	064-39506	064-39506
29	Nut, Connecting Rod	021-09932	021-09932	021-09932	021-09932
30	Washer, Connecting Rod	021-01274	021-01274	021-01274	021-01274
31	High Stage Piston Assembly <sup>1</sup> (Used in Cylinders No.) Includes items 32-35	3,4	3,4	3,4,9,10	5,6,13,14
32	Piston	064-36242	064-36242	064-36242	064-36242
33	Ring, Piston, Plain (2 Req'd/Piston)	029-03669	029-03669	029-03669	029-03669
34	Pin, Piston	029-13090	029-13090	029-13090	029-13090
35	Spring, Piston Pin Locking (2 Req'd/Piston)	029-13091	029-13091	029-13091	029-13091
36	High Stage Connecting Rod <sup>1</sup>	364-37127	364-37127	364-37127	364-37127
37	Bolt, Connecting Rod	064-39506	064-39506	064-39506	064-39506
38	Nut, Connecting Rod	021-09932	021-09932	021-09932	021-09932
39	Washer, Connecting Rod	021-01274	021-01274	021-01274	021-01274

<sup>1</sup> Earliest design GC compressors did not have the crankcase equalized to suction pressure. Many of these compressors have since been field modified to equalize the crankcase to suction pressure. Compressors manufactured after Feb., 1972 have the crankcase equalized to suction pressure.

The high stage connecting rod listed above has a roller bearing in the wrist pin end. This connecting rod must be used with the high stage piston listed above (and vice-versa) as the diameter of the wrist pin is greater than that of a standard wrist pin.

When replacing pistons or connecting rods in compressors that do not have the crankcase equalized to suction pressure, the high stage pistons and connecting rods listed above should be used in all cylinders (low and high stage). (See preceding paragraph)

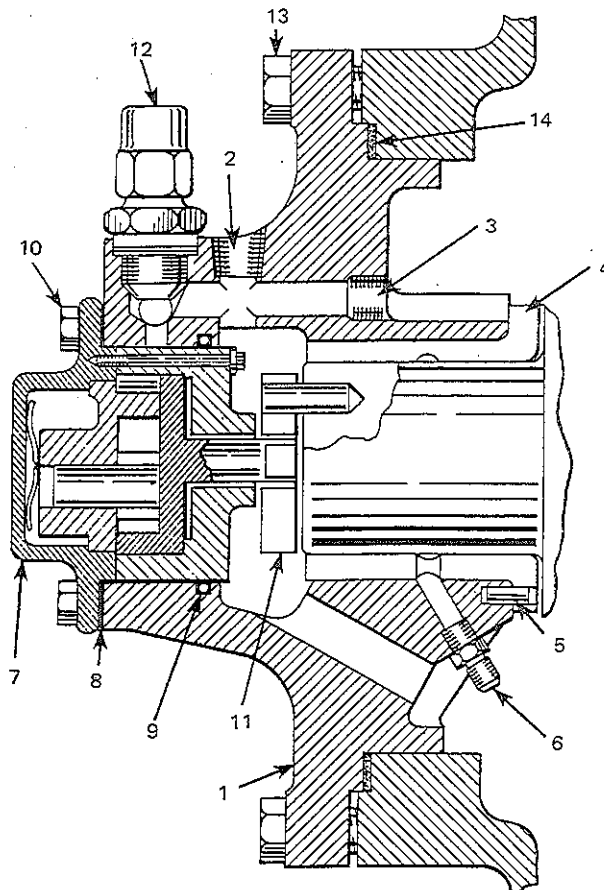
Compressors which have the crankcase equalized to suction (from the factory or field modified) can use the low and high stage pistons and connecting rods in the respective cylinders. However, high stage pistons and connecting rods must be matched as explained in the second paragraph above.

TABLE 1 (Cont'd)

ITEM NO.	DESCRIPTION	PART NO.			
		6 CYL	8 CYL	12 CYL	16 CYL
40	Screen, Suction Strainer	029-03847	029-03847	029-03847	029-03847
41	Stud, Suction Strainer	064-00377	064-00377	064-00377	064-00377
42	Lockwasher, 3/8"	021-05269	021-05269	021-05269	021-05269
43	Gasket, Stud	028-00757	028-00757	028-00757	028-00757
44	Cover, Suction Strainer	064-28040	064-28040	064-28040	064-28040
45	Nut, Hex 3/8"	021-00466	021-00466	021-00466	021-00466
46	Gasket, Cover	070-03808	070-03808	070-03808	070-03808
47	Screw, Cover (3/8" x 1-1/8") (6 Req'd)	021-01483	021-01483	021-01483	021-01483
48	Cover, Crankcase (Has Provision For Sight Glass)	064-18926	064-18926	064-18926	064-18926
49	"O" Ring (Sight Glass)	028-06791	028-06791	028-06791	028-06791
50	Sight Glass	026-10797	026-10797	026-10797	026-10797
51	Screw, Sight Glass (3 Req'd)	021-01372	021-01372	021-01372	021-01372
52	Pipe Plug (3/8")	023-01983	023-01983	023-01983	023-01983
53	Pipe Plug (3/4")	023-04053	023-04053	023-04053	023-04053
54	Reflector, Sight Glass	064-25874	064-25874	064-25874	064-25874
55	Cover, Crankcase (Has Provision For Cap. Tube Oil Cooler)	064-21245	064-21245	064-21245 (3 Req'd)	064-21245 (3 Req'd)
56	Gasket, Crankcase Cover	070-02497	070-02497	070-02497	070-02497
57	Screw, Cap (16 Req'd/Cover)	021-09592	021-09592	021-09592	021-09592
58	Manifold, Discharge	364-19811	364-20292	364-19834 (2 Req'd)	364-20358 (2 Req'd)
59	Gasket, Discharge Manifold	028-00864	028-00864	028-00864	028-00864
60	Gasket, 2nd Stage Suction Elbow	028-00875	028-00875	028-00875	028-00875
61	Ring "O" Suction Elbow Plate	028-06788	028-06788	028-06788	028-06788
62	Ring "O", Cylinder Sleeve req'd on high stage cyl. of compr. manufactured since Feb. 1972. req'd on all cylinders of prior models.	028-03878	028-03878	028-03878	028-03878

TABLE 2 — PUMP END BEARING HEAD

ITEM NO.	DESCRIPTION	PART NO.
1	Pump End Bearing Head	064-03899
2	Pipe Plug (3/8")	023-04298
3	Set Screw (5/8" x 1/2")	021-00859
4	Bearing, Pump End	064-00331
5	Roll Pin	029-03989
6	Connection, Cinch	023-06801
7	Oil Pump Assembly	364-05894
8	Gasket, Oil Pump	064-20109
9	"O" Ring	028-05163
10	Screw (5/16" x 7/8") (8 Req'd)	021-01425
11	Crank, Oil Pump	364-00325
12	Oil Pressure Regulator	364-00329
13	Cap Screw (1/2" x 1-3/4") (8 Req'd)	021-02751
14	Gasket, Bearing Head	028-00824



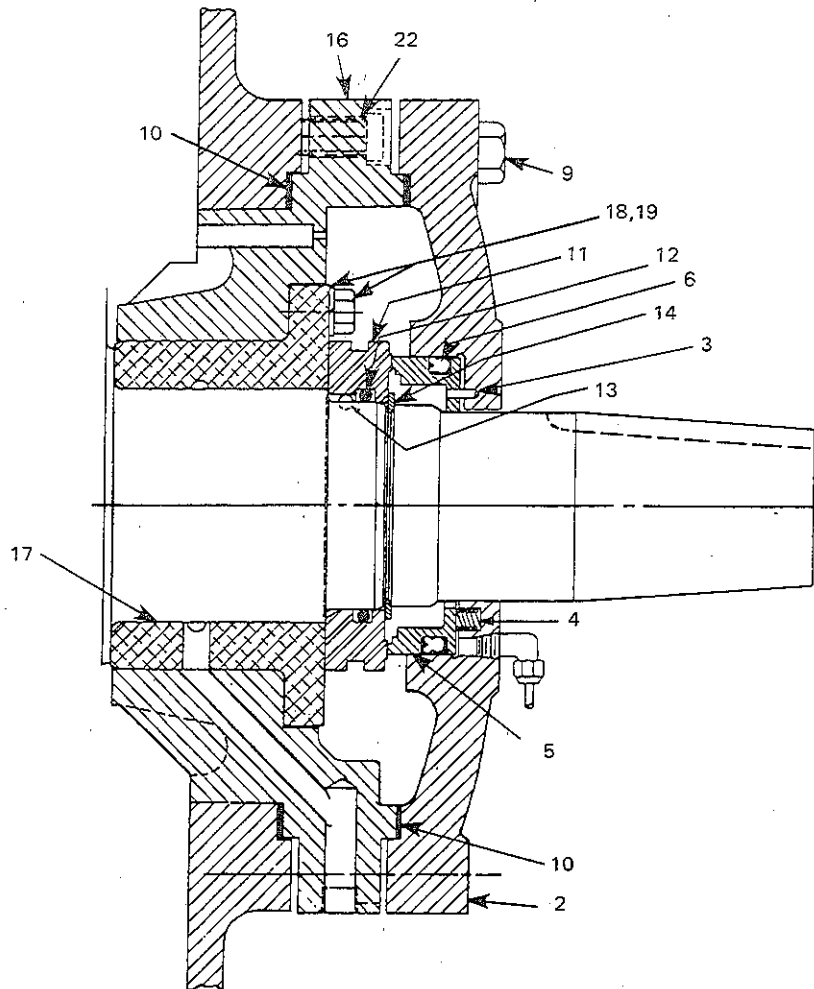


TABLE 3 — SHAFT SEAL BEARING HEAD

ITEM NO.	DESCRIPTION	PART NO.
1	Shaft Seal Cover Plate Assembly Includes items 2-8	364-30974
2	Cover Plate, Shaft Seal	064-04722
3	Roll Pin	029-04290
4	Spring, Helical (12 Req'd)	029-04010
5	Ring, Shaft Seal	064-24443
6	Ring, Quad Back	028-07898
7	Elbow, 3/8"	023-06814
8	Elbow, 1/4"	023-07170
9	Cap Screw, Cover Plate (1/2" x 3-1/4") (8 Req'd)	021-09204
10	Gasket, Shaft Seal	028-00824
11	Collar, Shaft Seal	064-04739
12	"O" Ring	028-07420
13	Ball, Locking	029-01845
14	Ring, Retaining	029-09214
15	Seal End Bearing Head Ass'y Includes items 16-21	364-30973
16	Bearing Head, Seal End	064-00292
17	Bearing, Thrust	064-00324
18	Cap Screw (3/8" x 1-1/8") (6 Req'd)	021-01483
19	Lockwasher (3/8") (6 Req'd)	021-05247
20	Drain Plug	064-24444
21	Tee (3/8" Cinch)	023-09017
22	Cap Screw, Socket Hd (1/2" x 1-1/4") (4 Req'd)	021-02590

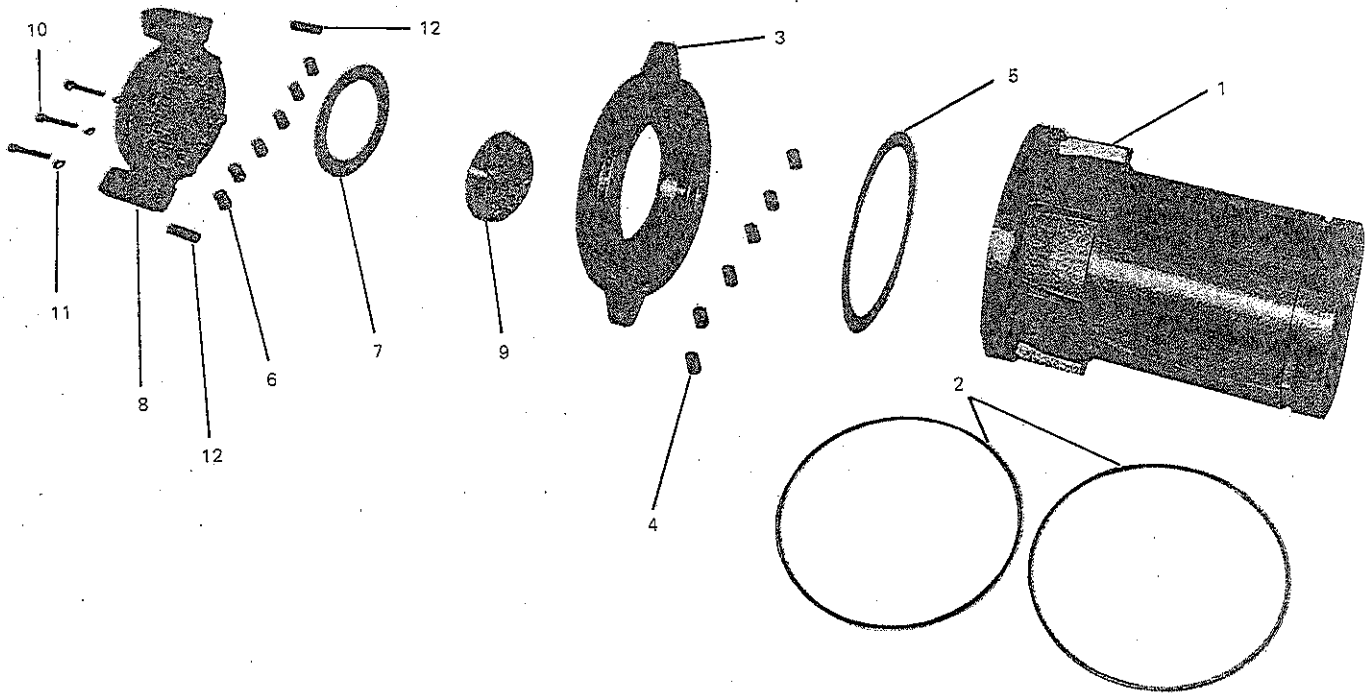
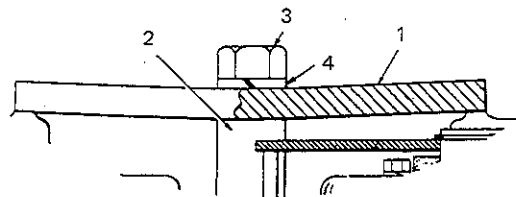


TABLE 4 — NON-UNLOADING TYPE CYLINDER

ITEM NO.	DESCRIPTION	PART NO.	ITEM NO.	DESCRIPTION	PART NO.
1	Sleeve, Cylinder, Non-Unloading	064-15557	8A	Cage Assembly (Includes items 6,7,8,9,10,11,12)	
2	Gasket (2 Req'd)	064-14346		R-12, R-22, R-502 (Low Stage)	364-34103
3	Plate R-12, R-22, R-502 R-717	364-34110 364-34108		R-12, R-22, R-502 (High Stage)	364-34104
4	Spring (6 Req'd)	029-13813		R-717 (Low & High Stage)	364-34103
5	Valve	064-14341	9	Seat, Valve	064-13846
6	Spring (6 Req'd)	029-13248	10	Screw (3 Req'd)	021-13819
7	Valve	064-12164	11	Lockwasher (3 Req'd)	021-05287
8	Cage		12	Pin, Insert	029-08661
	R-12, R-22, R-502 (Low Stage)	364-34112			
	R-12, R-22, R-502 (High Stage)	364-34114			
	R-717 (Low & High Stage)	364-34112			

COMMON PARTS

ITEM NO.	DESCRIPTION	PART NO.
1	Plate, Hold Down	064-13859
2	Spacer	064-15571
3	Screw, Cap, Hex Hd.	021-01598
4	Lockwasher, Spring, 1/2" Heavy	021-05293



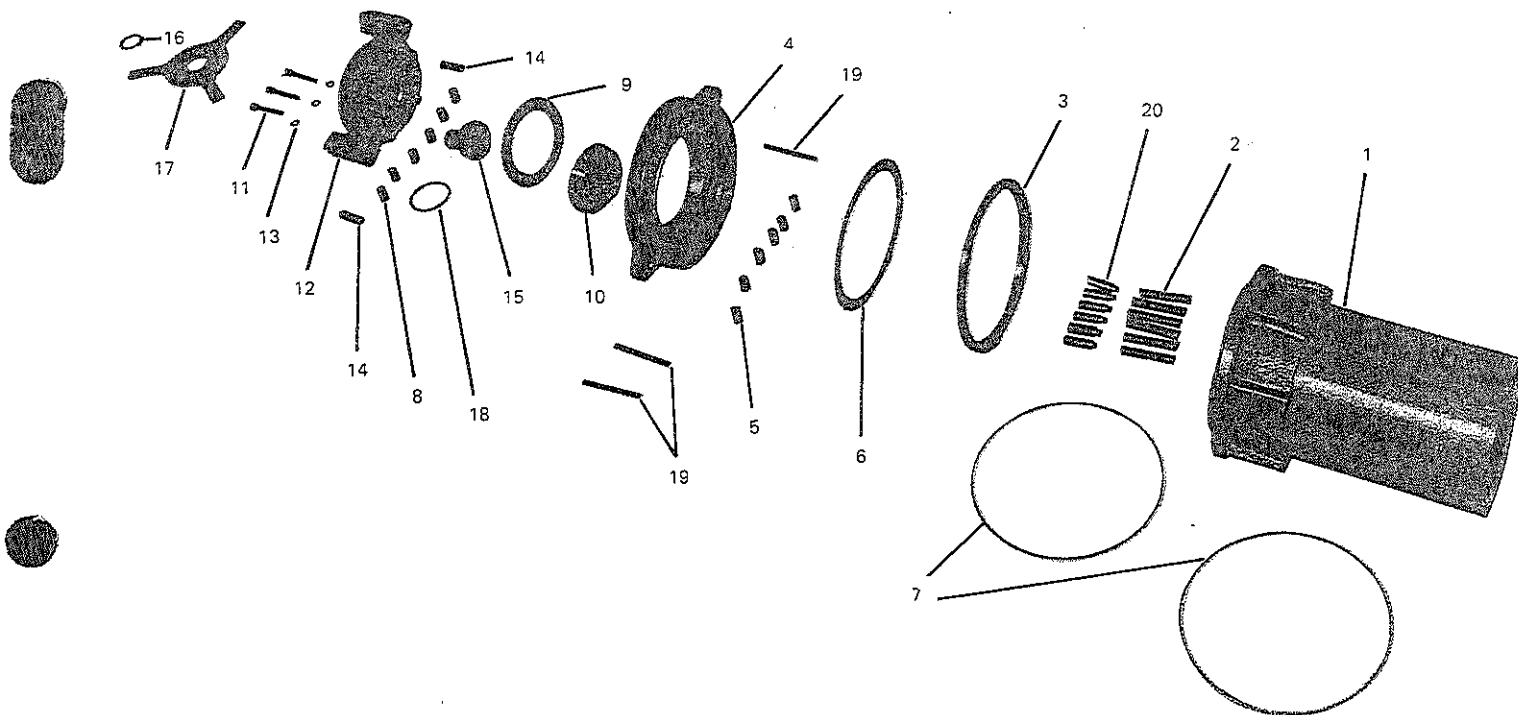


TABLE 5 — UNLOADING TYPE CYLINDER

ITEM NO.	DESCRIPTION	PART NO.	ITEM NO.	DESCRIPTION	PART NO.
1	Sleeve, Cylinder (Unloading)	064-15556	12A	Valve Cage Assembly (Includes items 8,9,10,11,12,13,14,15,16,17,18)	
2	Spring (6 Req'd)	029-12741		R-12, R-22, R-502 (Low Stage)	364-34105
3	Ring Unloader	064-14339		R-12, R-22 (High Stage)	364-34106
4	Plate R-12, R-22, R-502 R-717	364-34109 364-34107		R-717 (Low & High Stage)	364-34105
5	Spring (6 Req'd)	029-13813	13	Lockwasher (3 Req'd)	021-05287
6	Valve	064-14341	14	Pin, Insert	029-08661
7	Gasket (2 Req'd)	064-14346	15	Piston	064-21812
8	Spring (6 Req'd)	029-13248	16	Ring	029-12713
9	Valve	064-12164	17	Plate	064-17015
10	Seat, Valve	064-13846	18	Seal	026-15799
11	Screw (3 Req'd)	021-13819	19	Pin, Lifting	064-17025
12	Cage, Valve		20	Spud (6 Req'd)	064-25984
	R-12, R-22, R-502 (Low Stage)	364-34111			
	R-12, R-22 (High Stage)	364-34113			
	R-717 (Low & High Stage)	364-34111			

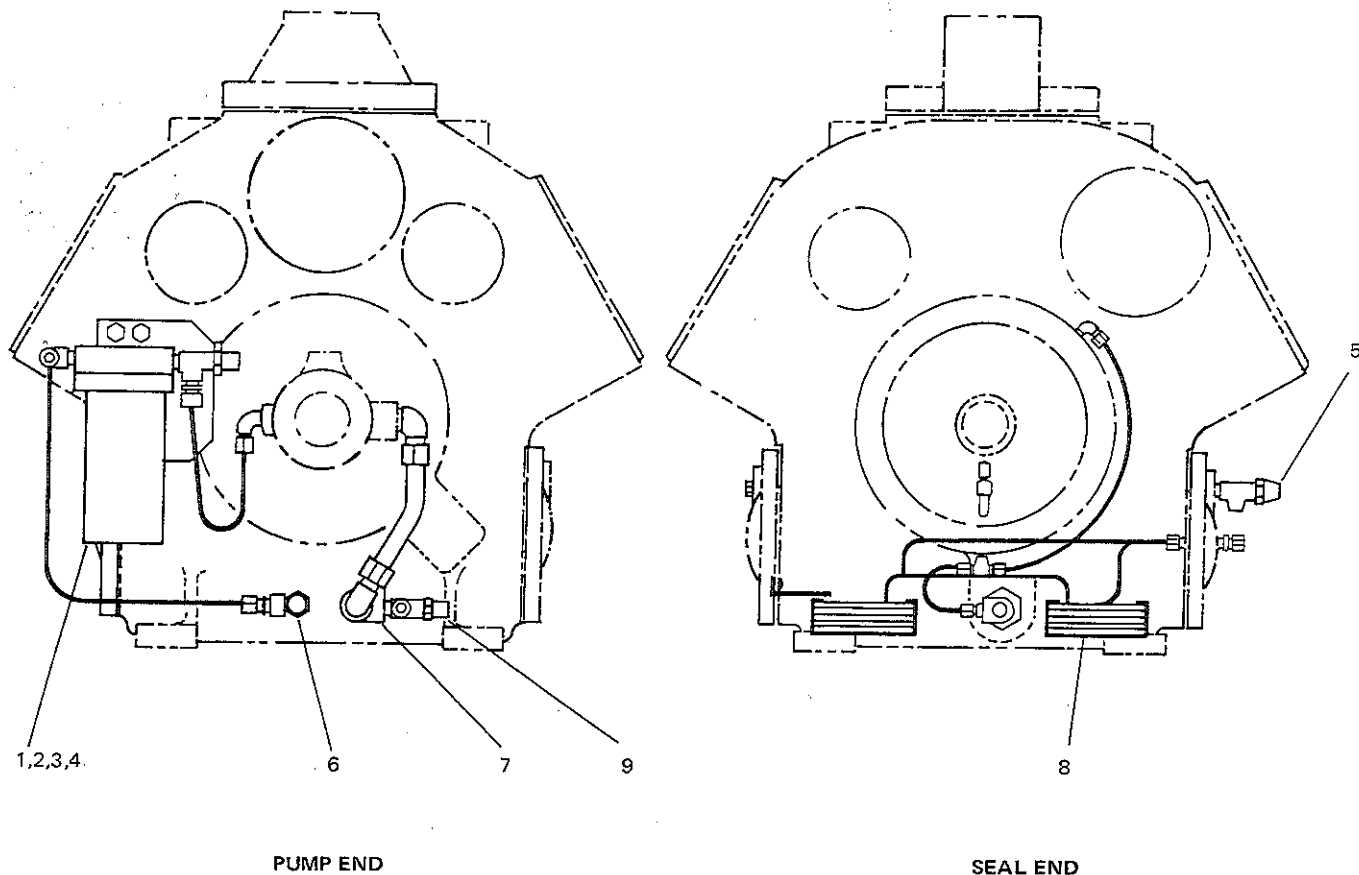


TABLE 6 — OIL PIPING COMPONENTS

ITEM NO.	DESCRIPTION	PART NO.	
		Halocarbon	Ammonia
1	Filter, Oil, Complete (11-1/8" Tank Length)	026-16209	026-16209
2	Cartridge and Gaskets (For Item 1)	026-18901	026-18901
3	Cartridge (For Old 7-1/8" Tank Length)	026-14642	026-14642
4	Kit, Conversion (Converts Old 7-1/8" Long Tank To 11-1/8" Long)	026-16299	026-16299
5	Valve, Angle Stop	022-02510	022-02510
6	Header, Oil Internal 6 & 8 Cylinder Models	364-30968	364-30968
	12 & 16 Cylinder Models	364-30969	364-30969
7	Strainer, Oil, Internal	029-13678	029-13678
8	Cooler, Oil Closed Loop	364-21286	364-21286
	Cap. Tube	364-36385	—
9	Valve	022-01582	022-01582

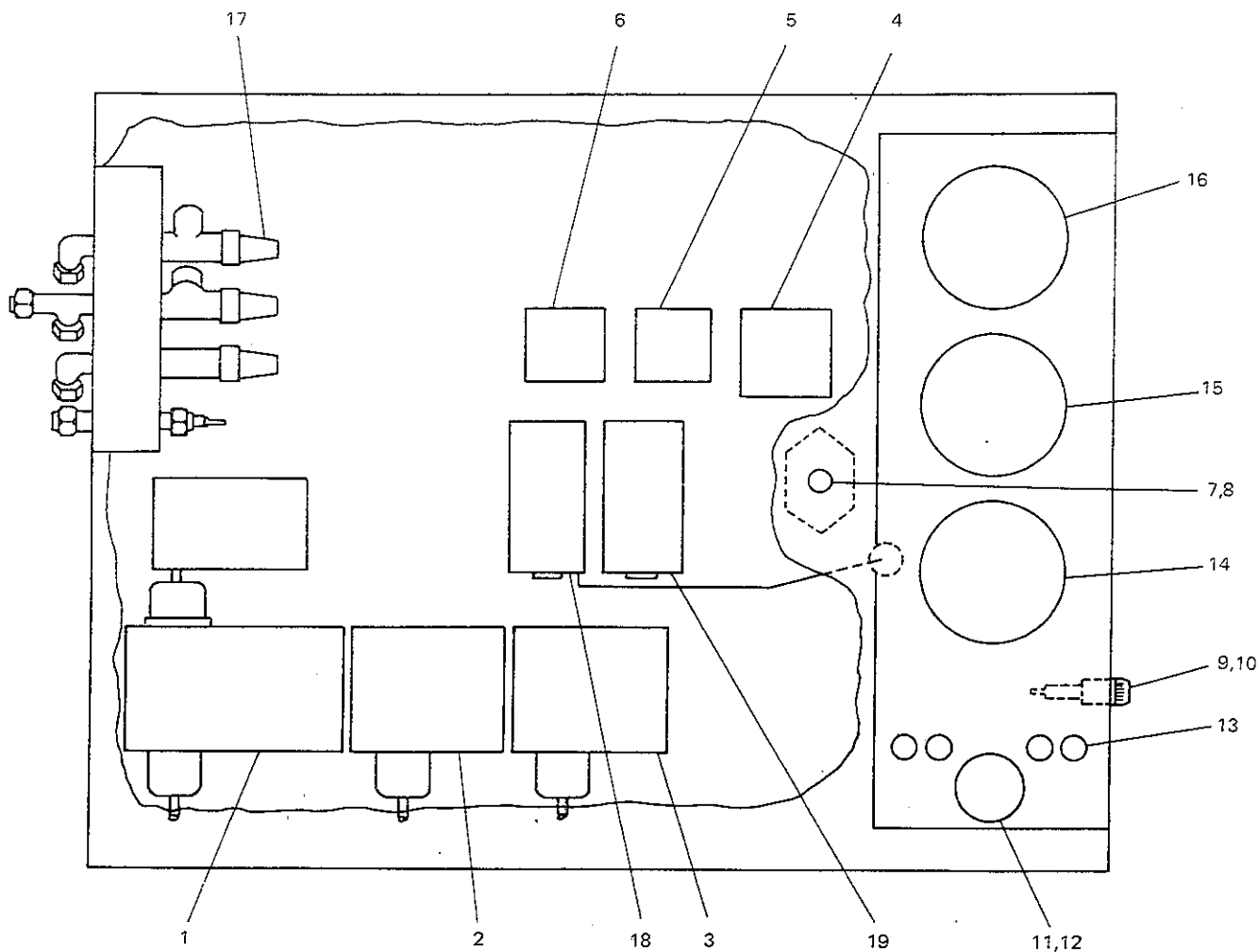


TABLE 7 — CONTROL PANEL R-12, R-22, R-502  
NEMA I

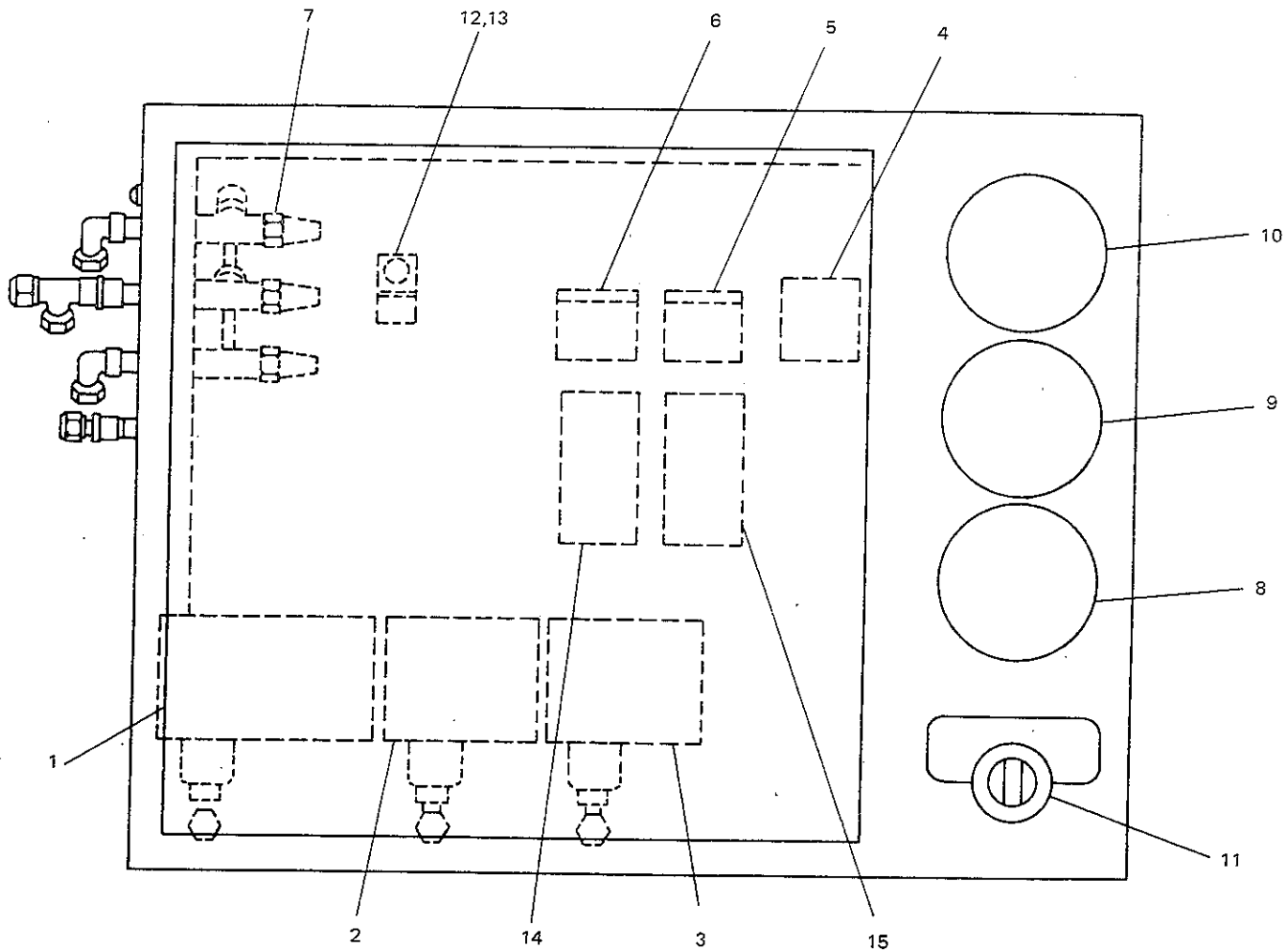
ITEM NO.	DESCRIPTION	PART NO.
1	Control, Oil Pressure	025-16484
2	Control, Low Pressure	025-12044
3	Control, High Pressure*	025-12238
4	Relay (1R)	024-18760
5	Relay (2R)	024-17075
6	Relay (3R)	024-14519
7	Lock & Key	029-07382
8	Key Only	029-10876
9	Fuse Holder	025-13991
10	Fuse	025-14019
11	Switch (3 Position)	024-13272
12	Knob (Switch)	364-68410
13	Light, Indicator (4 Req'd)	025-13551
14	Gauge, Oil Pressure	026-14296
15	Gauge, Suction Pressure	026-14295
16	Gauge, Discharge Pressure	026-14294
17	Valve, Gauge	022-02510
18	Control (HOT)	025-14268
19	Control (HDT)*	025-14269

\*2 Req'd on 12 & 16 Cylinder Models

TABLE 7 — CONTROL PANEL R-717 NEMA I

ITEM NO.	DESCRIPTION	PART NO.
1	Control, Oil Pressure	025-16483
2	Control, Low Pressure	025-12190
3	Control, High Pressure*	025-12191
4	Relay (1R)	024-18760
5	Relay (2R)	024-17075
6	Relay (3R)	024-14519
7	Lock & Key	029-07382
8	Key Only	029-10876
9	Fuse Holder	025-13991
10	Fuse	025-14019
11	Switch (3 Position)	024-13272
12	Knob (Switch)	364-68410
13	Light, Indicator (4 Req'd)	025-13551
14	Gauge, Oil Pressure	026-14364
15	Gauge, Suction Pressure	026-14365
16	Gauge, Discharge Pressure	026-14363
17	Valve, Gauge	022-02510
18	Control (HOT)	025-14268
19	Control (HDT)*	025-14269

\*2 Req'd on 12 & 16 Cylinder Models



**TABLE 8 — CONTROL PANEL R-12, R-22, R-502  
NEMA IV**

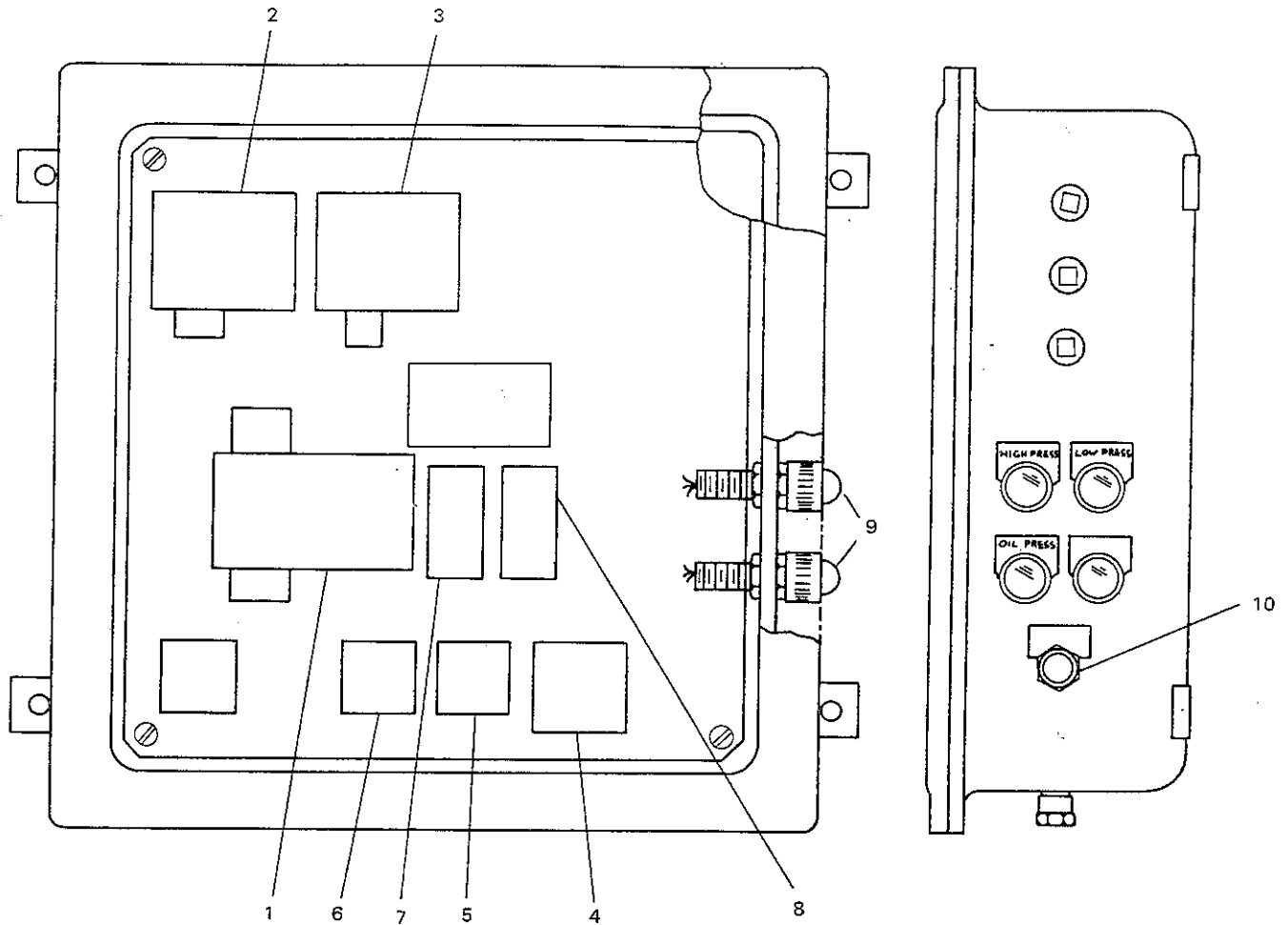
ITEM NO.	DESCRIPTION	PART NO.
1	Control, Oil Pressure	025-16484
2	Control, Low Pressure	025-12044
3	Control, High Pressure*	025-12238
4	Relay (1R)	024-18760
5	Relay (2R)	024-17075
6	Relay (3R)	024-14519
7	Valve, Gauge	022-02510
8	Gauge, Oil Pressure	026-14368
9	Gauge, Suction Pressure	026-14367
10	Gauge, Discharge Pressure	026-14366
11	Switch (3 Position)	024-13862
12	Fuse Holder	025-13991
13	Fuse	025-14019
14	Control (HOT)	025-14268
15	Control (HDT)*	025-14269

\* 2 Req'd on 12 & 16 Cylinder Models

**TABLE 8 — CONTROL PANEL R-717 NEMA IV**

ITEM NO.	DESCRIPTION	PART NO.
1	Control, Oil Pressure	025-16483
2	Control, Low Pressure	025-12190
3	Control, High Pressure*	025-12191
4	Relay (1R)	024-18760
5	Relay (2R)	024-17075
6	Relay (3R)	024-14519
7	Valve, Stop	022-02510
8	Gauge, Oil	026-14370
9	Gauge, Suction	026-14371
10	Gauge, Discharge	026-14369
11	Switch, 3 Position	024-13862
12	Fuseholder	025-13991
13	Fuse	025-14019
14	Control (HOT)	025-14268
15	Control (HDT)*	025-14270

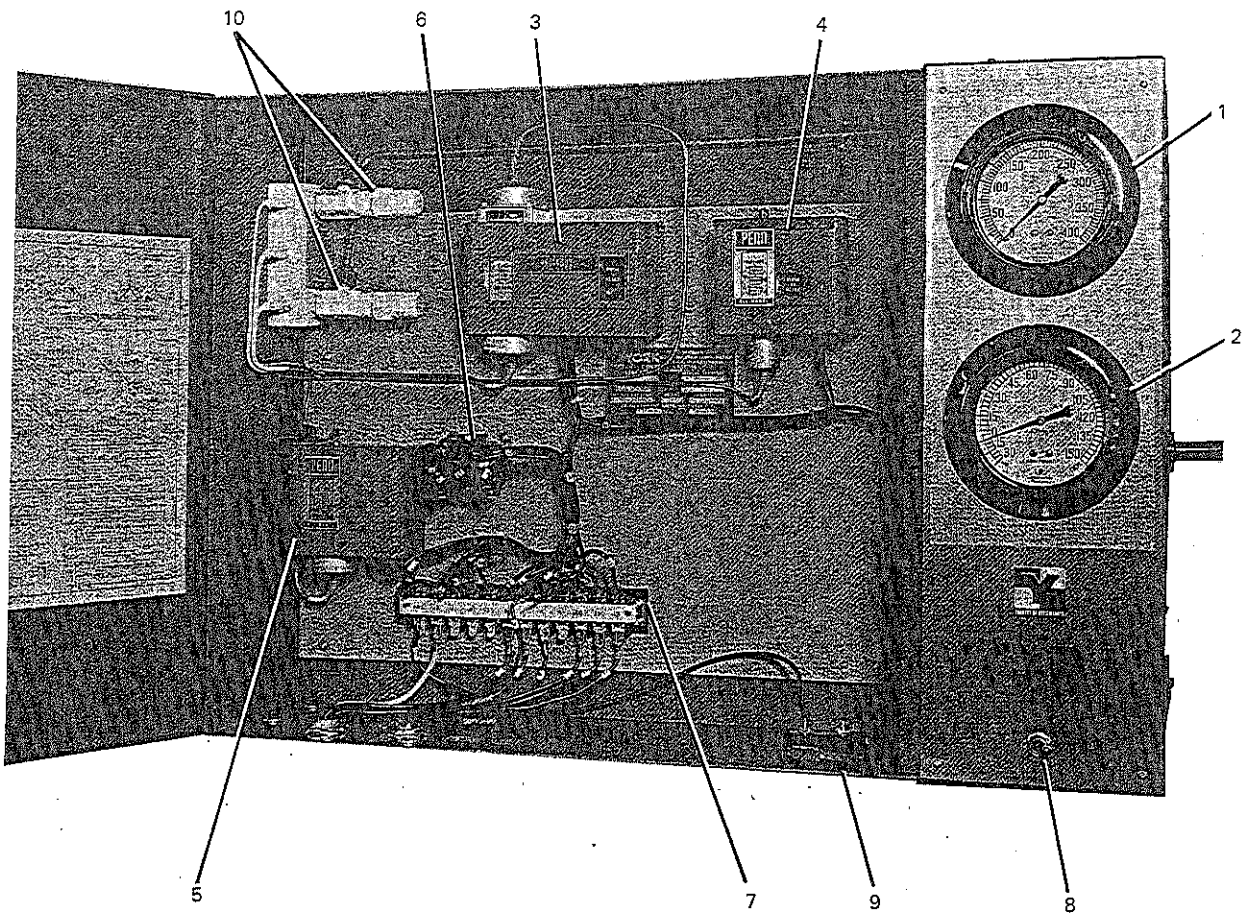
\* 2 Req'd on 12 & 16 Cylinder Models



**TABLE 9 — CONTROL PANEL (6,8,12,16 CYL)**  
R-12, R-22, R-502, R-717 NEMA 7 & 9

ITEM NO.	DESCRIPTION	PART NO.
1	Control, Oil Pressure	025-14667
2	Control, Low Pressure	025-12190
3	Control, High Pressure*	025-14668
4	Relay (1R)	024-18760
5	Relay (2R)	024-17075
6	Relay (3R)	024-14519
7	Control (HOT)	025-14669
8	Control (HDT)*	025-14670
9	Light, Indicating	025-13685
10	Switch, Selector	024-14183

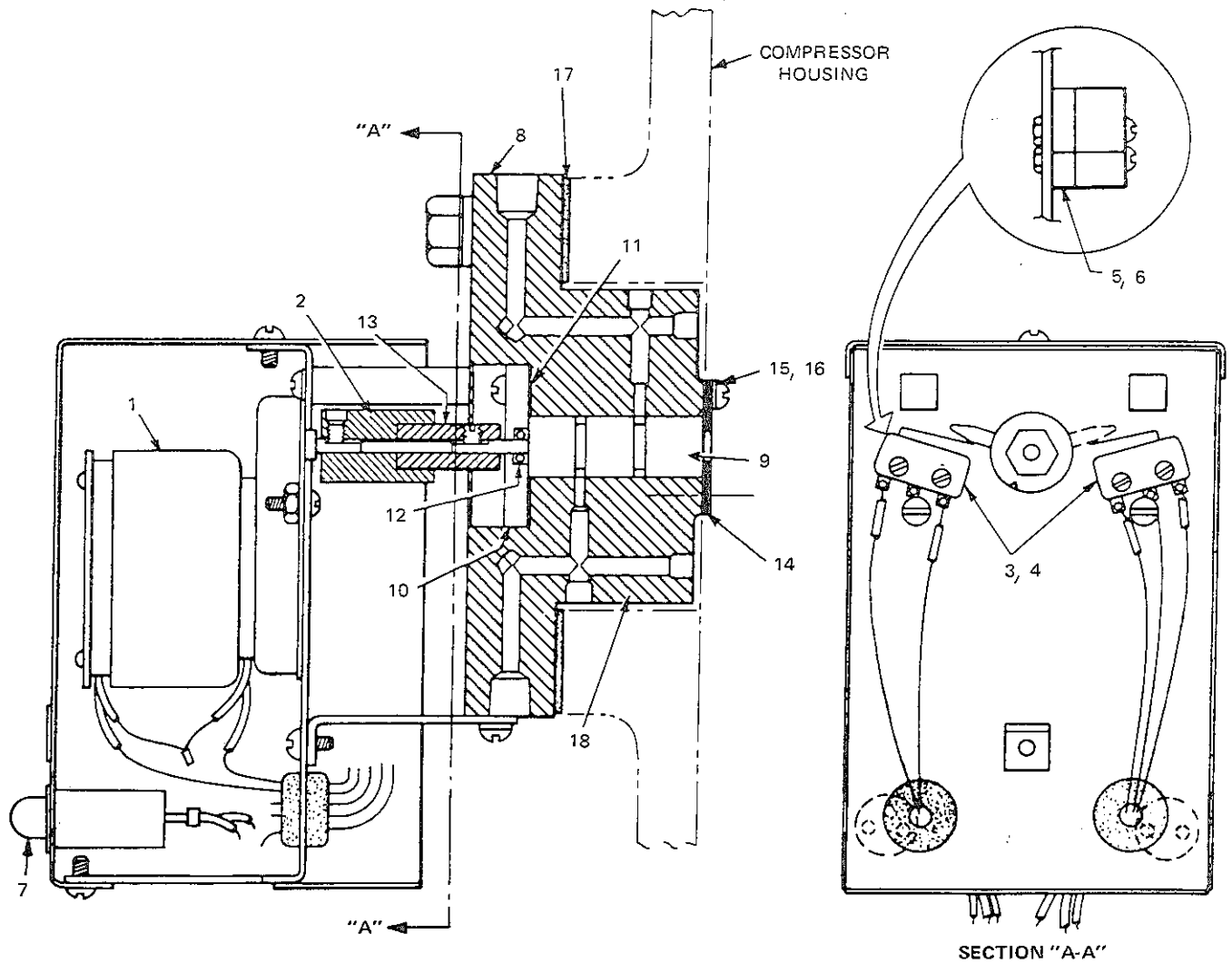
\* 2 Req'd on 12 & 16 Cylinder Models



ITEM NO.	PART NAME	YORK PART NUMBER
FOR REFRIGERANT - 12, -22, -502 UNITS		
1	Gauge, H.P.	026-12667
2	Gauge, L.P.	026-09098
3	Control, Oil Pressure	025-05783
4	Cut Out, High Pressure	025-12238
5	Cut Out, Low Pressure	025-12044
6	Relay, Compressor Control	024-11655
7	Strip, Terminal	362-61410
8	Switch, On-Off	024-11922
9	Switch, Door	024-09054
10	Valve, Gauge	022-01581

ITEM NO.	PART NAME	YORK PART NUMBER
FOR REFRIGERANT - 717 UNITS		
1	Gauge, H.P.	026-12558
2	Gauge, L.P.	026-12559
3	Control, Oil Pressure	025-05782
4	Cut Out, High Pressure	025-12191
5	Cut Out, Low Pressure	025-12190
6	Relay, Compressor Control	024-11655
7	Strip, Terminal	362-61410
8	Switch, On-Off	024-11922
9	Switch, Door	024-09054
10	Valve, Gauge	022-02510

FIG. 10 — GAUGES AND CONTROLS



**CONTROL MOTOR AND ASSOCIATED PARTS**

**CONTROL VALVE PARTS**

ITEM NO.	PART NAME	YORK PART NO.	ITEM NO.	PART NAME	YORK PART NO.
1	Control Motor, Floating & Proportional Type - 50/60 Hz. (Includes Gear Train, Case and Limit Switches)	024-14291	8	Body	064-20837
2	Coupling, Motor (Furnished with Item 1)	364-22027	9	Plunger	064-14943
3	Switch, Limit, for Floating Type Control	024-03717	10	Plate, Cover	064-14951
4	Switch, Limit, for Proportional Type Control	024-13863	11	Gasket, Cover Plate, Flat	064-16691
5	Shim, for Item 3	029-10765	12	Ring, "O", Cover Plate	028-06895
6	Shim, for Item 4	064-24297	13	Adapter, Shaft, Compressor	064-16892
7	Light, Pilot (See Note 2)	025-13011	14	Plate, Retaining	064-23031
			15	Screw, Retaining Plate	021-01758
			16	Lockwasher	021-05287
			17	Gasket	070-03808
			18	Valve, Capacity Control complete, Floating and Proportional Type (Includes Items 8 thru 16)	364-21538
			19	Manual Control Knob Assembly for Item 18 (See Note 1)	364-24220

**NOTES:**

1. Manual control knob assembly (19), (when used) is mounted on Shaft of Plunger (9) in place of Shaft Adapter (13).
2. Load indicator lights were used on earlier compressor units only. These lights are no longer used.

**FIG. 11 — CAPACITY CONTROL ASSEMBLY FLOATING TYPE - SECTIONAL VIEW**

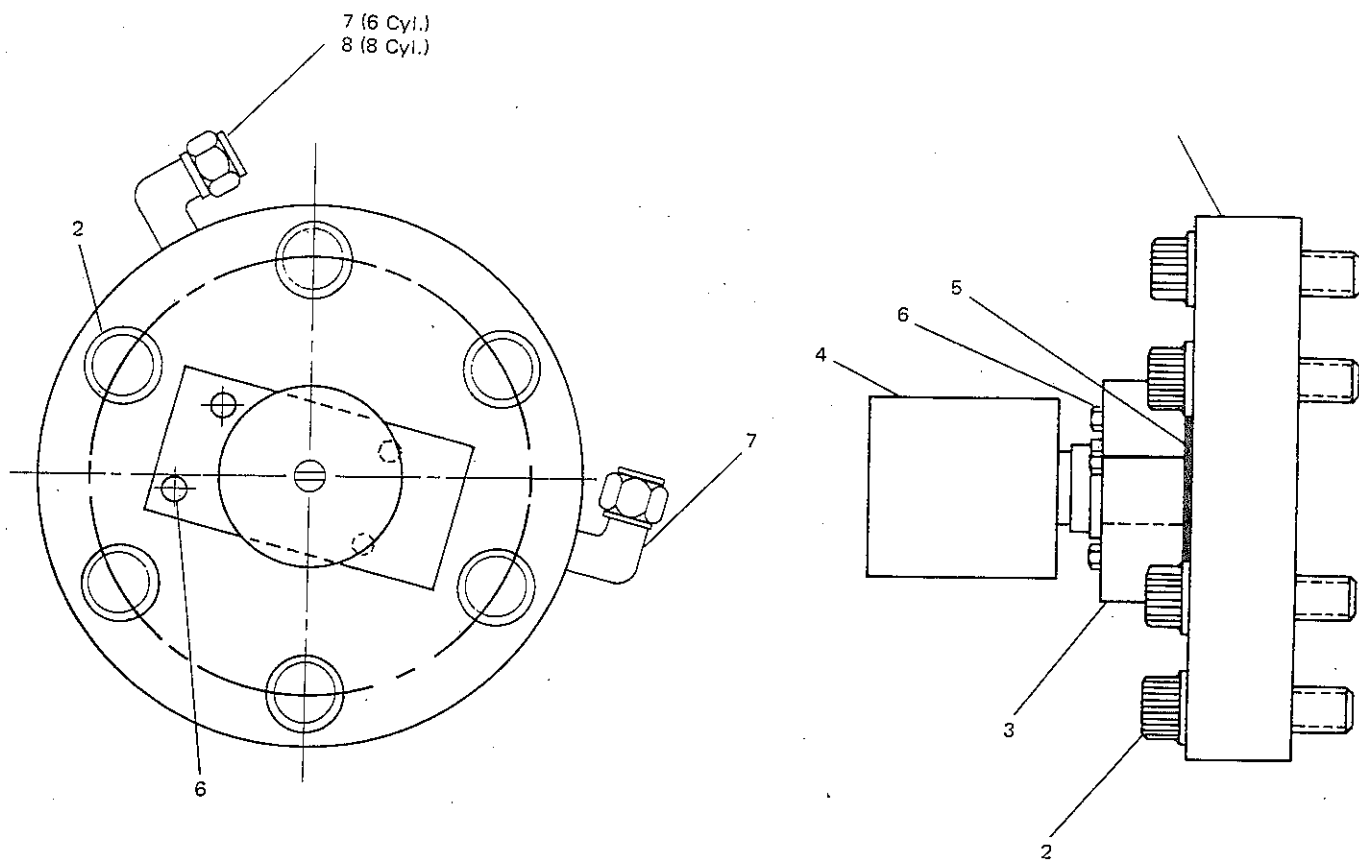
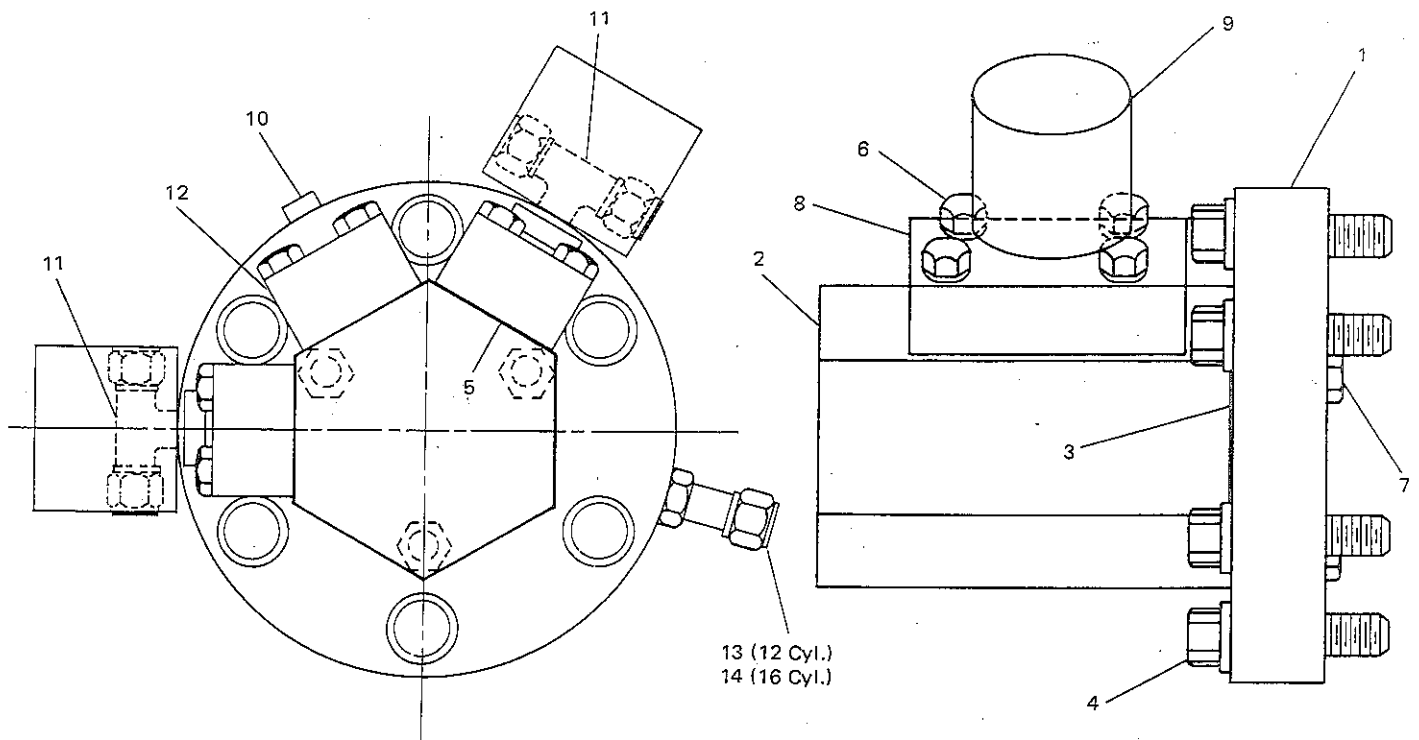


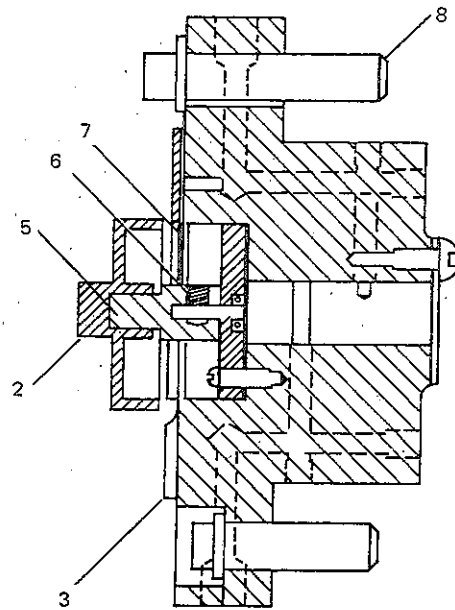
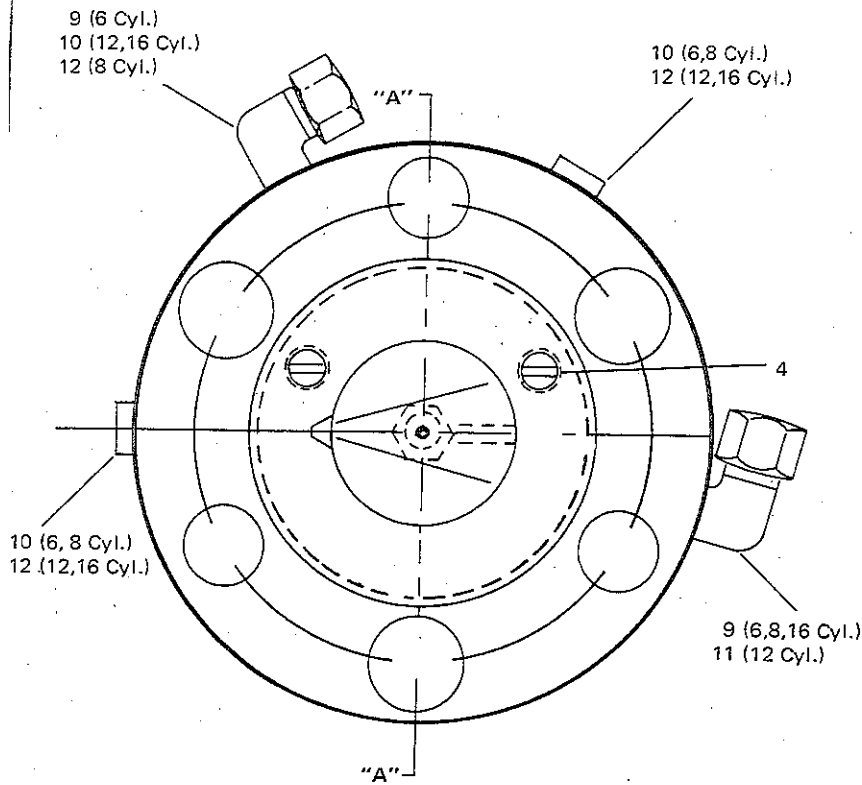
TABLE 12 — SOLENOID CAPACITY CONTROL  
6 & 8 CYLINDER

ITEM NO.	DESCRIPTION	PART NO.
1	Plate, Valve	064-33859
2	Screw, 12 pt (3/8" x 1-3/8") (6 Req'd)	021-11986
3	Valve, Solenoid NEMA 1, 3 & 4 NEMA 7, 9	025-17295-001 025-17295-002
4	Coil, Solenoid NEMA 1 120 Volt 208/230 Volt NEMA 3, 4, 7 & 9 120 Volt 208/230 Volt	025-16572-005 025-16572-001 025-17355-002 025-17355-001
5	Gasket, Valve	064-33854
6	Screw (1/4" x 1") (4 Req'd)	021-11914
7	Elbow (90°) 6 Cyl — 2 Req'd 8 Cyl — 1 Req'd	023-07190 023-07190
8	Tee (8 Cyl Only)	023-08434



**TABLE 13 — SOLENOID CAPACITY CONTROL  
12 & 16 CYLINDER**

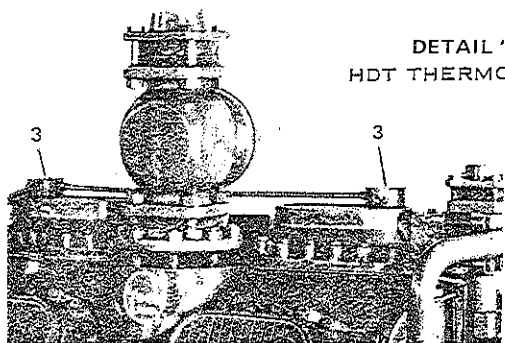
ITEM NO.	DESCRIPTION	PART NO.
1	Plate, Valve	064-33855
2	Header	064-33857
3	Gasket, Valve Plate	064-33856
4	Screw, 12 pt (3/8" x 1-3/8") (6 Req'd)	021-11986
5	Gasket, Valve (3 Req'd)	064-33854
6	Screw (1/4" x 1") 12 Req'd)	021-11914
7	Screw (1/4" x 1-1/4") (3 Req'd)	021-11393
8	Valve, Solenoid (2 Req'd) NEMA 1, 3 & 4 NEMA 7, 9	025-17295-001 025-17295-002
9	Coil, Solenoid (2 Req'd) NEMA 1 120 Volt 208/230 Volt NEMA 3, 4, 7 & 9 120 Volt 208/230 Volt	025-16572-005 025-16572-001 025-17355-002 025-17355-001
10	Plug, Pipe (1/8")	023-01970
11	Tee, Cinch (2 Req'd)	023-08434
12	Plate, Cover	064-33858
13	Connection, Cinch (12 Cyl Only)	023-07151
14	Elbow, Cinch (90°) (16 Cyl Only)	023-07170



SECTION "A-A"

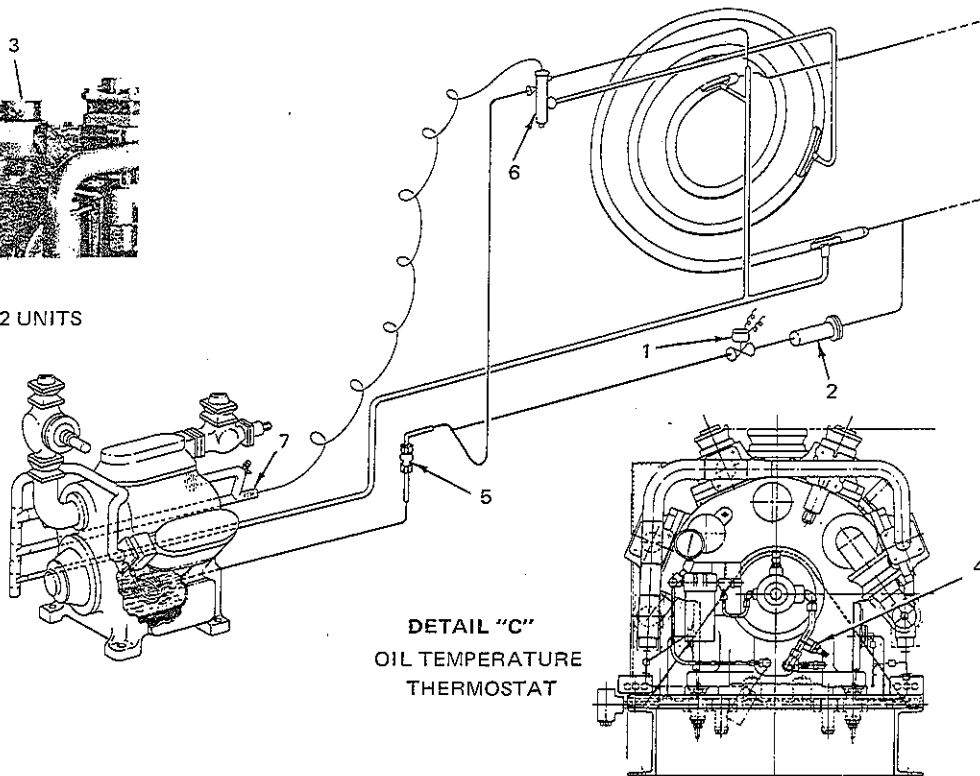
TABLE 14 — CAPACITY CONTROL MANUAL

ITEM NO.	DESCRIPTION	PART NO.
1	Body, Valve	364-21538
2	Knob, Switch	029-09293
3	Indicator, Dial	364-27471
4	Screw (1/4" x 3/8") (2 Req'd)	021-13173
5	Shaft, Adapter	064-24219
6	Screw, Set (No. 5-40 x 1/8)	021-09923
7	Washer, Plain (2 Req'd)	021-10189
8	Screw (3/8" x 1-1/4") (3 Req'd)	021-11141
9	Elbow (90°) 6 Cyl (2 Req'd) 8 Cyl (1 Req'd) 12 Cyl (0 Req'd) 16 Cyl (1 Req'd)	023-07170
10	Plug, Pipe 6 Cyl (2 Req'd) 8 Cyl (2 Req'd) 12 Cyl (1 Req'd) 16 Cyl (1 Req'd)	023-01970
11	Connr, Cinch 6, 8, 16 Cyl (0 Req'd) 12 Cyl (1 Req'd)	023-07151
12	Tee, Cinch 6 Cyl (0 Req'd) 8 Cyl (1 Req'd) 12 Cyl (2 Req'd) 16 Cyl (2 Req'd)	023-08434



DETAIL "B"  
HDT THERMOSTATS

DETAIL "A"  
REFRIGERANT-12,-22, AND -502 UNITS



DETAIL "C"  
OIL TEMPERATURE  
THERMOSTAT

FOR REFRIGERANT - 12, 22, -502 UNITS

ITEM NO.	PART NAME	YORK PART NUMBER
1	<sup>1</sup> Valve, Solenoid with Strainer (Alco)	025-09694
2	Valve, Solenoid (Jackes-Evans-One Used per Unit)	025-13824
	Strainer, Used with Jackes-Evans Solenoid	029-08224
3	<sup>2</sup> Thermostat, High Discharge Temperature	025-09776
4	Thermostat, Oil Temperature	025-12541
5	Strainer, H. P. Liquid to Oil Cooling Coil	029-10345
6	<sup>1</sup> Power Element and Cage, Alco (See Below)	
7	Compound, Heat Conducting (103)	013-00898

<sup>1</sup> One valve each used on 6 and 8 cylinder compressor units; two each on 12 and 16 cylinder units.

<sup>2</sup> One high discharge temperature thermostat each used on 6 and 8 cylinder units; two each on 12 and 16 cylinder units.

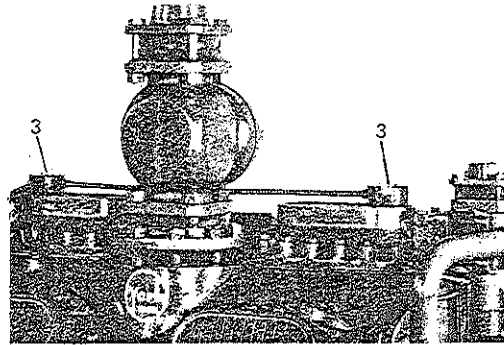
VALVE-EXPANSION (LESS BODY & SCREWS)\*

DESIGN EVAP TEMP RANGE	REFRIG	SPEED RANGE					
		1100 - 1300 RPM		1300 - 1600 RPM		1600 - 1800 RPM	
		6 & 12 CYL	8 & 16 CYL	6 & 12 CYL	8 & 16 CYL	6 & 12 CYL	8 & 16 CYL
0 TO -25°	R-12	025-13818	025-13818	025-13818	025-18244	025-18244	025-18244
-25 TO -45°		025-13797	025-13797	025-18245	025-18245	025-18245	025-13818
-45 TO -70°		025-13797	025-13797	025-13797	025-13797	025-13797	025-13797
0 TO -40°	R-22	025-13801	025-13819	025-13819	025-13820	025-13819	025-13820
-40 TO -65°		025-13798	025-13801	025-13801	025-13801	025-13801	025-13801
-65 TO -100°		025-13798	025-13798	025-13798	025-13798	025-13798	025-13798
0 TO -40°	R-502	025-18246	025-18246	025-13800	025-13800	025-13800	025-13800
-40 TO -65°		025-13799	025-13802	025-13802	025-13802	025-13802	025-13802
-65 TO -100°		025-18247	025-18247	025-18247	025-13799	025-13799	025-13799

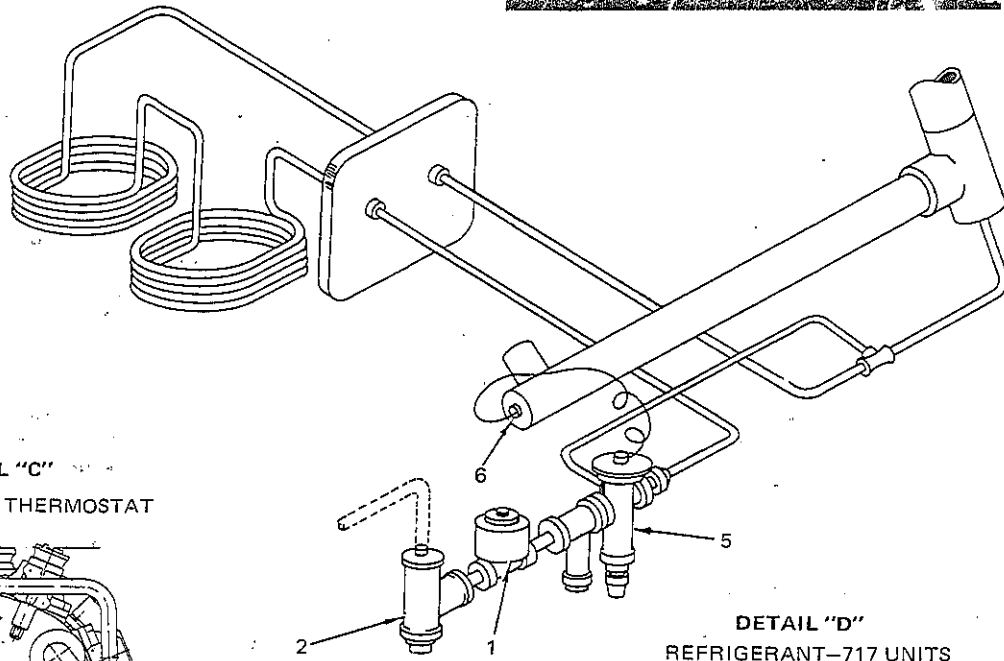
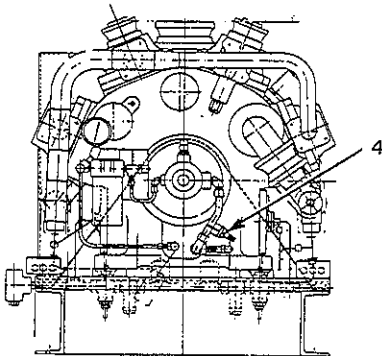
\*NOTE: 1-Valve Required on 6 & 8-Cyl Compr; 2-Required on 12 & 16-Cyl Compr.

FIG. 17 — THERMAL EXPANSION AND SOLENOID VALVES, REFRIGERANTS-12, -22 AND -502 UNITS.

DETAIL "B"  
HTD THERMOSTATS



DETAIL "C"  
OIL TEMPERATURE THERMOSTAT



DETAIL "D"  
REFRIGERANT-717 UNITS

FOR REFRIGERANT - 717 UNITS (AMMONIA)

ITEM NO.	PART NAME	YORK PART NUMBER
1	<sup>1</sup> Valve, Solenoid (Jacks-Evans)	025-09704
	<sup>3</sup> Valve, Solenoid (Jacks-Evans) (12 and 16 Cyl.)	025-14544
2	Strainer Tee	368-01043
3	Thermostat, High Discharge Temperature	025-12590
4	Thermostat, Oil Temperature	025-12541
5	<sup>1</sup> Valve, Thermal Expansion with Strainer (Sporlan)	025-13396
6	Compound, Heat Conducting (1 oz.)	013-00898

<sup>1</sup> One valve each used on 6 and 8 cylinder compressor units; two each on 12 and 16 cylinder units.  
<sup>2</sup> One high discharge temperature thermostat each used on 6 and 8 cylinder units; two each on 12 and 16 cylinder units.  
<sup>3</sup> One valve each used on 12 and 16 cylinder units instead of two 025-09704

FIG. 18 — THERMAL EXPANSION AND SOLENOID VALVES, REFRIGERANT-717 UNITS.