



**MODEL J – STYLE G
HERMETIC COMPRESSORS**

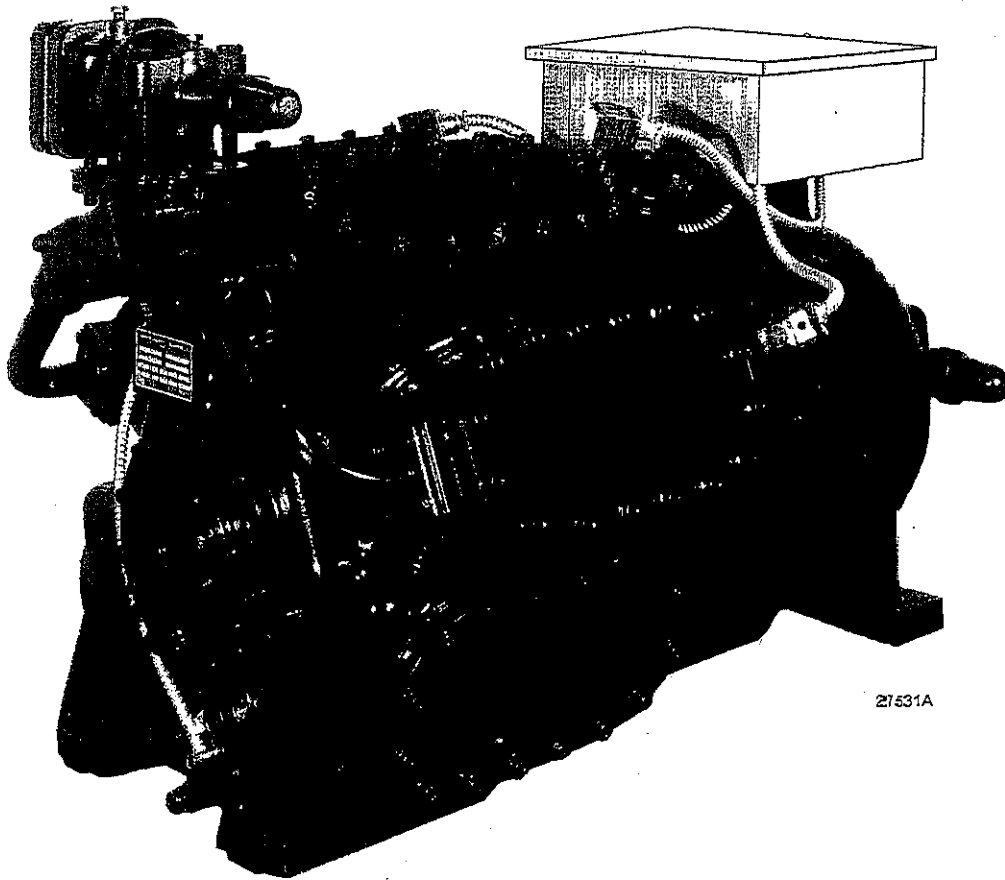
RENEWAL PARTS

Supersedes: 180.23-RP4 (695)

Form 180.23-RP4 (1298)

**MODELS
JG43, JG63, JG83
JG44, JG64, JG84**

(See Page 2 for Complete Model Nomenclature)

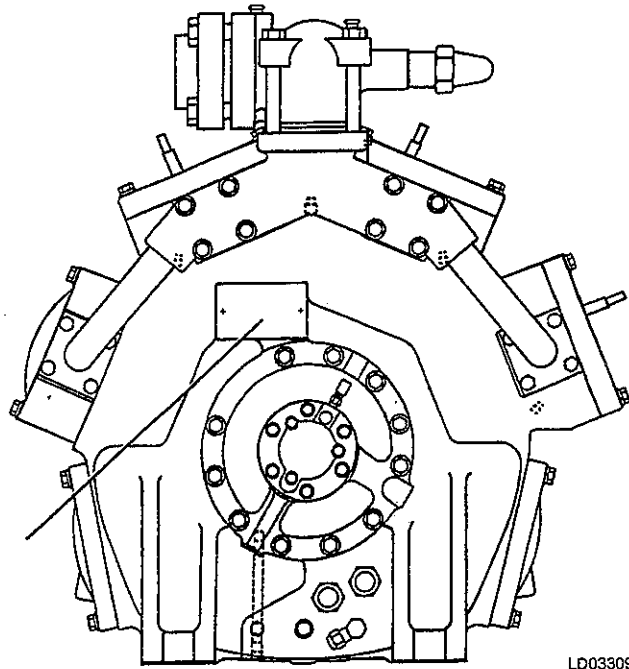
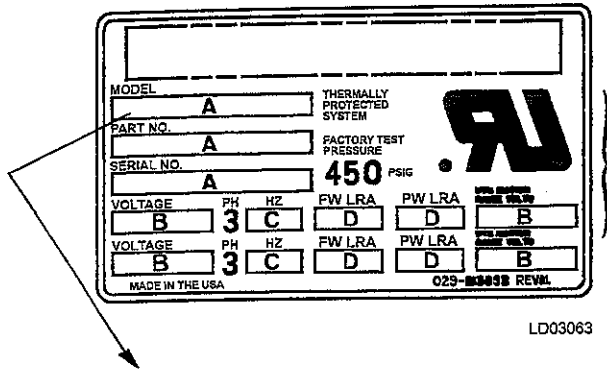


27531A

UNIT NOMENCLATURE

COMPRESSOR IDENTIFICATION

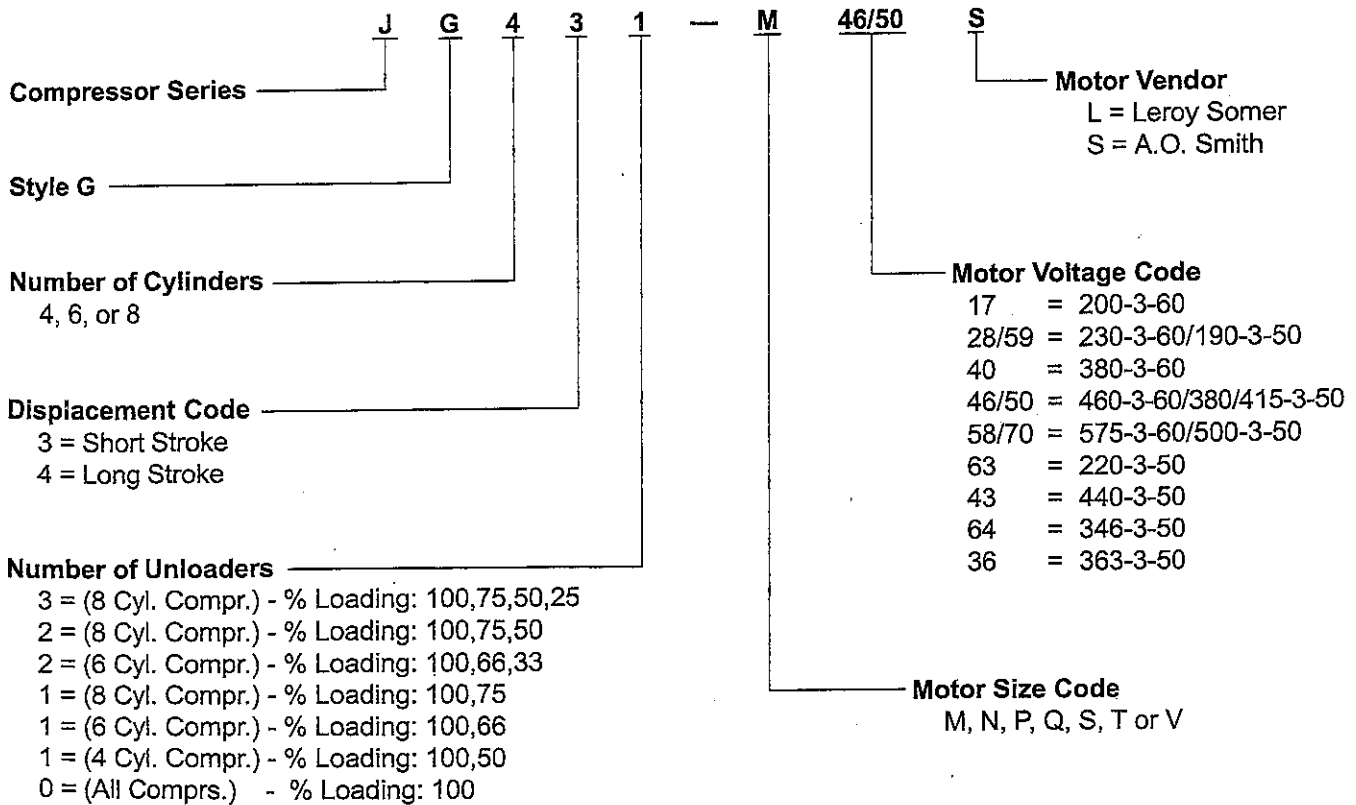
Each compressor is identified by nomenclature as shown below. The nomenclature is printed on a data plate which is located near the oil pump as shown in Fig. 1. When contacting the factory or ordering renewal parts, include the complete Nomenclature, Serial Number, and Date Code. Be sure that these numbers are copied accurately.

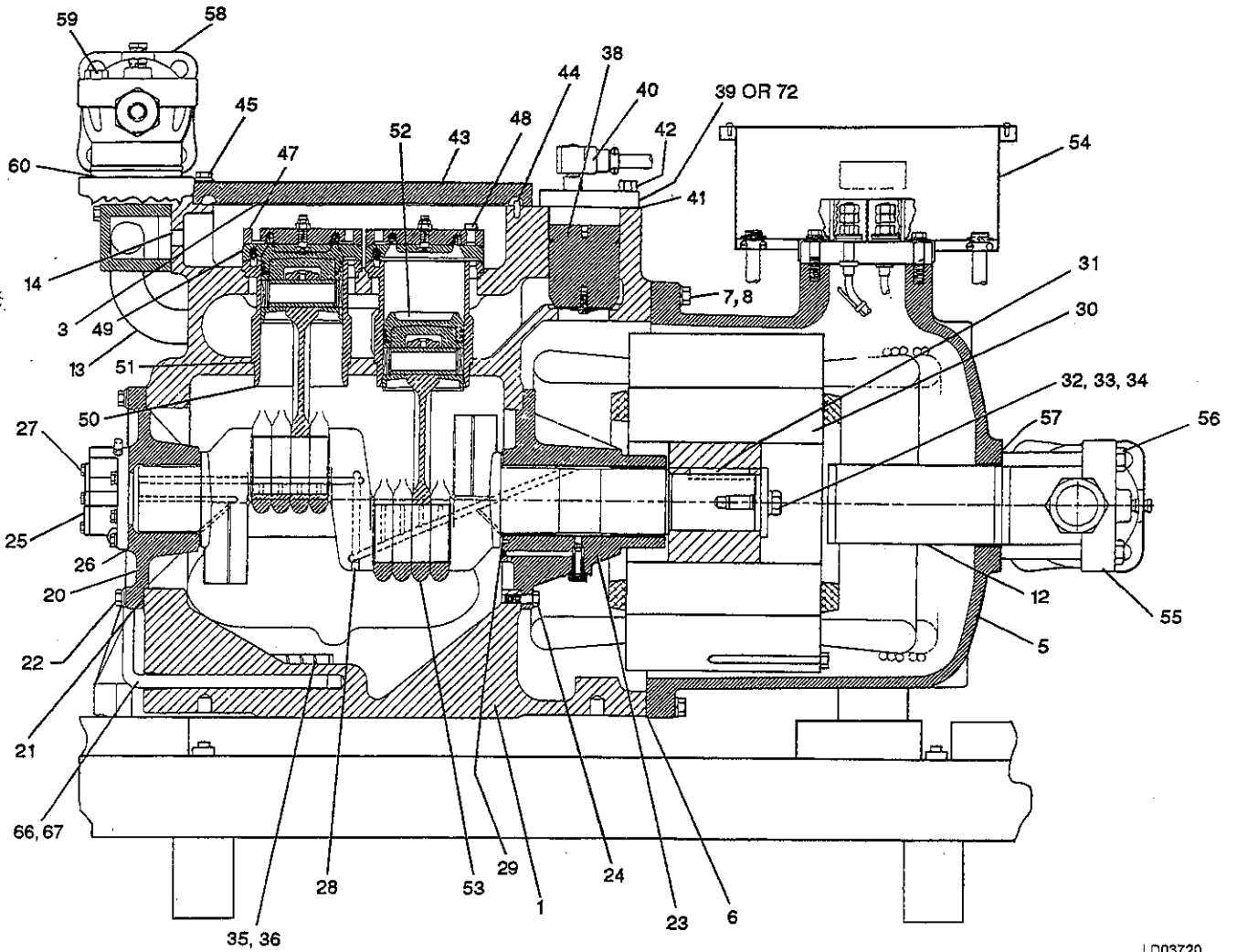


LD03309

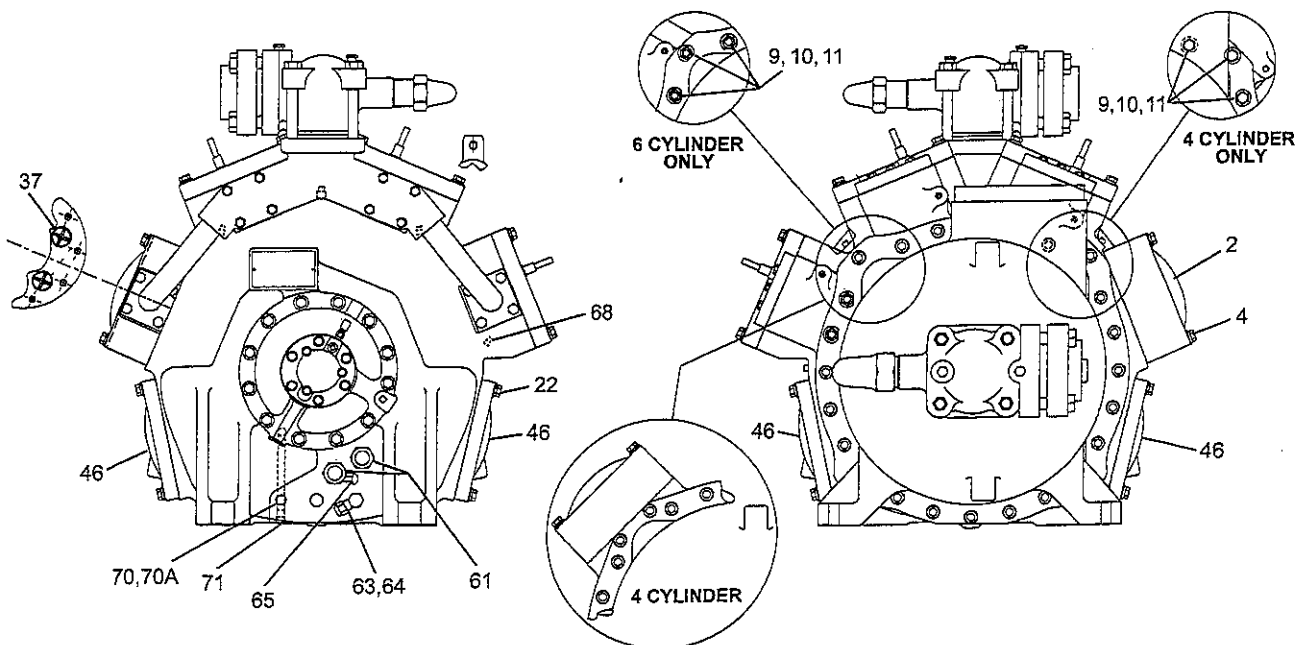
LD03063

FIG. 1 - COMPRESSOR DATA PLATE





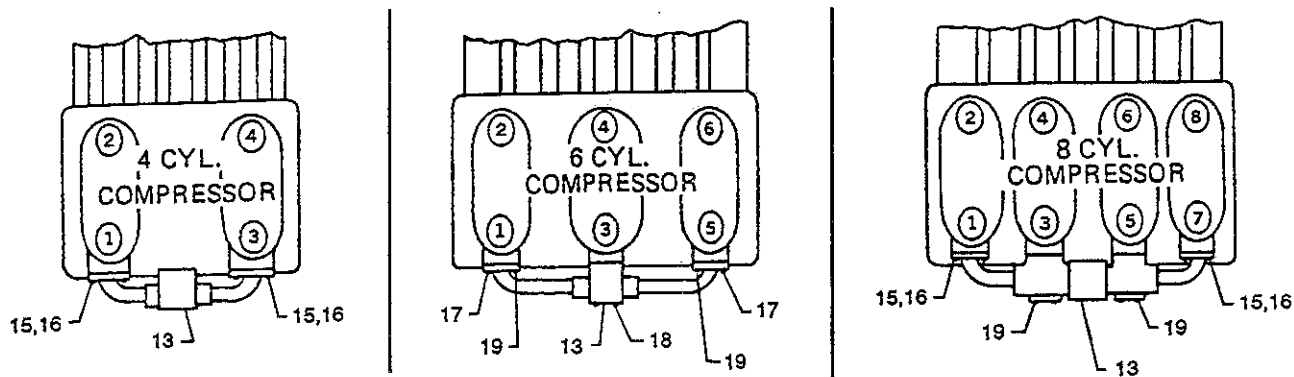
LD03720



LD03721

FIG. 2 - COMPRESSOR

YORK INTERNATIONAL



LD03064

FIG. 3 - MANIFOLD ARRANGEMENTS

ITEM NO.	DESCRIPTION	COMPRESSOR		
		4 CYLINDER	6 CYLINDER	8 CYLINDER
1	Housing, Compressor	064-48243-000	064-48244-000	064-48179-000
2	Head Compressor	064-48321-000	064-48321-000	064-48321-000
3	Gasket, Head No. Required Per Compressor	028-12559-000 4	028-12559-000 5	028-12559-000 6
4	Screw, Head No. Required Per Compressor	021-17783-000 16	021-17783-000 16	021-17783-000 16
5	Cover, Motor	064-48363-000	064-48177-000	064-48178-000
6	Gasket, Motor Cover	028-13108-000	028-13108-000	028-13108-000
7	Screw, 1/2 Hex Cap No. Required Per Compressor	021-18021-000 22	021-18021-000 21	021-18021-000 22
8	Lockwasher, Helic. Spring No. Required Per Compressor	021-05271-000 22	021-05271-000 21	021-05271-000 22
9	Stud, 1/2 No. Required Per Compressor	021-12731-000 3	021-12731-000 3	021-12731-000 2
10	Nut, 1/2 Hex No. Required Per Compressor	021-11154-000 3	021-11154-000 2	021-11154-000 2
11	Washer Clipped Circular No. Required Per Compressor	021-17774-000 3	021-17774-000 3	021-17774-000 2
12	Screen, Suction (See Item 57 for Gasket)	026-28473-000	026-28473-000	026-28474-000
13	Manifold, Discharge	064-23147-000	064-48320-000	664-48341-000
14	Gasket, Discharge Manifold No. Required Per Compressor	064-21838-000 2	064-21838-000 3	064-21838-000 4
15	Screw, 3/8 Hex Cap No. Required Per Compressor	021-01485-000 8	— —	021-01485-000 8
16	Washer No. Required Per Compressor	021-16814-000 8	— —	021-16814-000 8
17	Screw, 3/8 Hex Flange No. Required Per Compressor	— —	021-17784-000 4	— —
18	Screw, 3/8 Hex Flange No. Required Per Compressor	— —	021-17782-000 4	— —
19	Screw, 3/8 Hex Flange No. Required Per Compressor	— —	021-17781-000 4	021-08875-000 8
20	Bearing Head Oil Pump End	See Figure 9		
21	Gasket, Bearing Head Oil Pump End	028-12554-000	028-12554-000	028-12554-000
22	Screw, Hex Flange No. Required Per Compressor	021-17692-000 44	021-17692-000 44	021-17692-000 44

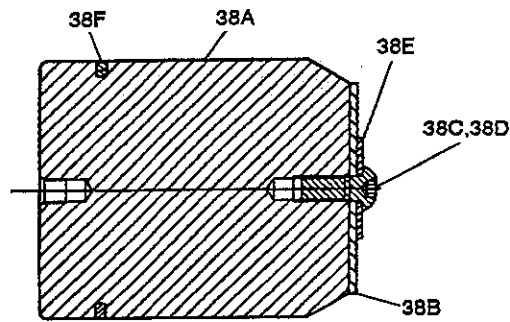
ITEM NO.	DESCRIPTION	COMPRESSOR		
		4 CYLINDER	6 CYLINDER	8 CYLINDER
23	Head, Bearing Assembly Motor End	See Figure 9		
24	Screw, 7/16 Hex No. Required Per Compressor	021-10387-000 4	021-10387-000 4	021-10387-000 4
25	Pump, Oil	665-25326-000 365-665-25326-000	665-25326-000	665-25326-000 026-3238
26	Gasket, Oil Pump	028-12556-000	028-12556-000	028-12556-000
27	Screw, Hex Flange No. Required Per Compressor	021-17689-000 6	021-17689-000 6	021-17689-000 6
28	Crankshaft Stroke 3 Stroke 4	664-47209-000 664-47215-000	664-47210-000 664-47216-000	664-47211-000 664-47217-000
29	Washer, Thrust*	029-11098-000	029-11098-000	029-11098-000
30	Motor	See Table 2		
31	Key, Motor	064-26560-000	064-26560-000	064-26560-000
32	Washer, Shaft	064-21835-000	064-21835-000	064-21835-000
33	Screw, 5/8 Hex Cap	021-08363-000	021-08363-000	021-08363-000
34	Lockwasher, Shaft	021-05295-000	021-05295-000	021-05295-000
35	Screen, Oil Strainer	029-20032-000	029-20032-000	029-20032-000
36	Retaining Compound, Loctite (Use with Item 35)	013-01752-000	013-01752-000	013-01752-000
37	Valve, Relief (Not Shown) No. Required Per Compressor	022-03871-000 1	022-03871-000 2	022-03871-000 2
38	Device, Unloader No. Required Per Compressor	See Figure 4 See Table 1		
39	Valve, Solenoid No. Required Per Compressor	025-29999-000	025-29999-000	025-29999-000
40	Coil, Solenoid Less Valve 120 Volt 240 Volt No. Required Per Compressor	025-30976-000 025-30977-000	025-30976-000 025-30977-000	025-30976-000 025-30977-000
41	Gasket, Solenoid Valve No. Required Per Compressor	028-12558-000 1	028-12558-000 2	028-12558-000 3
42	Screw, 3/8 Hex Cap No. Required Per Compressor	021-17690-000 6	021-17690-000 12	021-17690-000 18
43	Cover, Access No. Required Per Compressor	064-48176-000 1	064-48176-000 2	064-48176-000 3
44	Pin, Coiled Spring No. Required Per Compressor	029-21378-000 1	029-21378-000 2	029-21378-000 3
45	Screw, 7/16 Hex Flange No. Required Per Compressor	021-17693-000 16	021-17693-000 32	021-17693-000 48
46	Cover, Handhole No. Required Per Compressor	064-21645-000 2	064-21645-000 2	064-21645-000 2
47	Valve Cage Assembly (Discharge)	See Figure 5		
48	Screw, Discharge Valve Cage No. Required Per Compressor	021-16827-000 16	021-16827-000 24	021-16827-000 32
49	Plate, Valve Suction	See Figure 6		
50	Sleeve, Cylinder No. Required Per Compressor	064-48192-000 4	064-48192-000 6	064-48192-000 8
51	Seal, O-Ring No. Required Per Compressor Cylinders Used On	028-12259-000 2 1 & 2	028-12259-000 4 1, 2, 5 & 6	028-12259-000 6 3, 4, 5, 6, 7 & 8

*Not shown in Cut-away. Located at motor end bearings only.

LEGEND (Cont'd.)

ITEM NO.	DESCRIPTION	COMPRESSOR		
		4 CYLINDER	6 CYLINDER	8 CYLINDER
52	Piston Assembly	See Figure 7		
53	Connecting Rod Assembly	See Figure 8		
54	Terminal Box	See Figure 10		
55	Valve, Suction Stop	022-02844-000	022-02844-000	022-02845-000
56	Screw, 5/8 Hex Cap No. Required Per Compressor	021-16817-000 4	021-16817-000 4	021-16818-000 4
57	Gasket (2 Required)	064-47079-000	064-47079-000	064-47204-000
58	Valve, Discharge Stop	022-01394-000	022-01394-000	022-02844-000
59	Screw, 5/8 Hex Cap No. Required Per Valve	021-16821-000 4	021-16821-000 4	021-16817-000 4
60	Gasket	064-47078-000	064-47078-000	064-47079-000
61	Sight Glass, Oil (2 Required)	026-17581-000	026-17581-000	026-17581-000
62	Sealer, Refrigerant Pipe	013-02894-000	013-02894-000	013-02894-000
63	Valve, Oil Charging	022-01582-000	022-01582-000	022-01582-000
64	Cap, Oil Charging Valve	023-00977-000	023-00977-000	023-00977-000
65	Valve, Oil Check, 1/8	022-04444-000	022-04444-000	022-04444-000
66	Crankcase Heater -- 120V -- 240V	025-29650-000 025-29651-000	025-29650-000 025-29651-000	025-29650-000 025-29651-000
67	Heat Conductive Compound	013-00898-000	013-00898-000	013-00898-000
68	Drain Orifice Plug (Not Shown) No. Required Per Compressor	064-47349-000 1	064-47349-000 2	064-47349-000 3
69	Pipe Plug, 1/4 Square Hd (Not Shown) No. Required Per Compressor	023-01972-000 3	023-01972-000 4	023-01972-000 5
70	Pipe Plug, 3/8	023-01983-000	023-01983-000	023-01983-000
70A	Oil Temp Sensor	025-32966-000	025-32966-000	025-32966-000
71	Pipe Plug, Magnetic Sq Hd	023-15718-000	023-15718-000	023-15718-000
72*	Cover Plate, Blank	064-48187-000	064-48187-000	064-48187-000

* Used to replace Solenoid Valves for reduced steps of unloading. See Table 1.



LD02968

ITEM NO.	DESCRIPTION	PART NO.
38	Unloader, Blocked Suction	
38A	Piston	064-48189-000
38B	Washer, Seal	028-12560-000
38C	Screw, Cap Hex Socket Head	021-17396-000
38D	Sealer, Loctite Grade AVV	013-01671-000
38E	Washer, Plain Special	021-17220-000
38F	Ring, Compression	029-20999-000

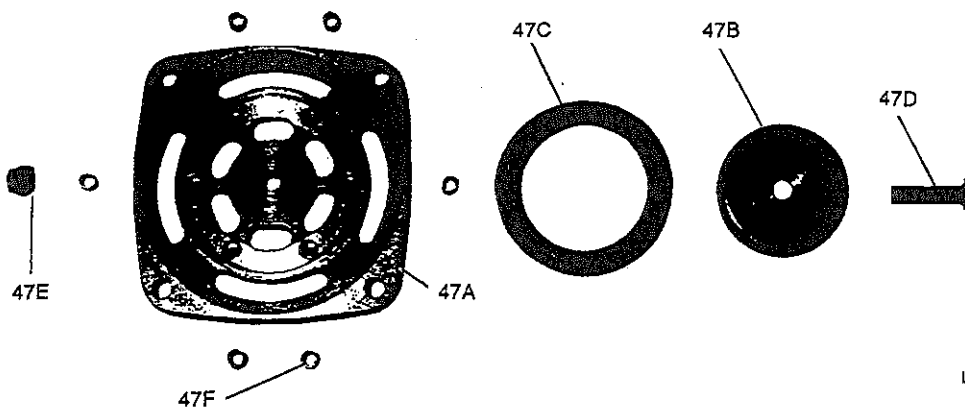
FIG. 4 - UNLOADING DEVICE

TABLE 1 - PART QUANTITIES FOR REDUCED STEPS OF UNLOADING

ITEM NO.	QUANTITY (Part Quantities Vary, as Shown, with Steps of Unloading)			
	NUMBER OF UNLOADERS			
	0	1	2	3
38	0	1	2	3
39	0	1	2	3
40	0	1	2	3
54W	11	11	13	15
72 (4 Cylinder)	1	0	N/A	N/A
72 (6 Cylinder)	2	1	0	N/A
72 (8 Cylinder)	3	2	1	0

N/A = Not Available

PRE 1996 DISCHARGE ASSY.

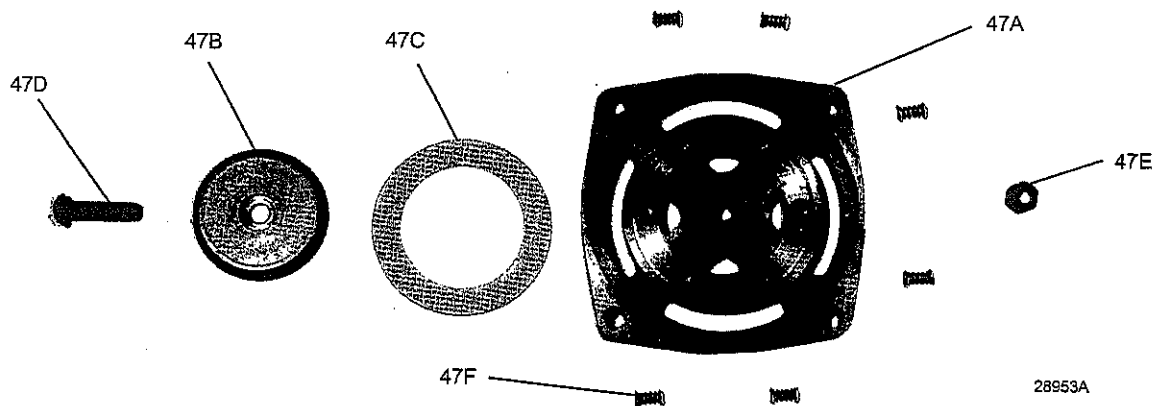


LD03722

ITEM NO.	DESCRIPTION	PART NUMBER
47	Cage, Discharge Valve Assembly Includes A, B, C, D, E, & F	664-48037-000
47A	Cage, Discharge Valve	064-43146-000
47B	Plate, Inner Valve	064-48032-000
47C	Valve, Discharge	064-43012-000
47D	Screw, 3/8 Button Head Cap	021-17649-000
47E	Nut, 3/8 Hex Self Locking	021-09932-000
47F	Spring, Helical No. Req'd. Per Valve Ass'y	021-13248-000 6

*Not Shown

CURRENT DISCHARGE ASSY.



28953A

ITEM NO.	DESCRIPTION	PART NUMBER
*47	Cage, Discharge Valve Assembly Includes A, B, C, D, E, & F	364-48785-000
47A	Cage, Discharge Valve	064-48787-000
47B	Plate, Inner Valve	064-48032-000
47C	Ring, Discharge Valve	064-43012-000
47D	Screw, 3/8 Button Head Cap	021-17649-000
47E	Nut, 3/8 Hex Self Locking	021-09932-000
47F	Spring, Helical No. Req'd. Per Valve Ass'y	021-21788-000 229 6

* = Recommended Stock Spare Part

FIG. 5 - DISCHARGE VALVE CAGE ASSEMBLY

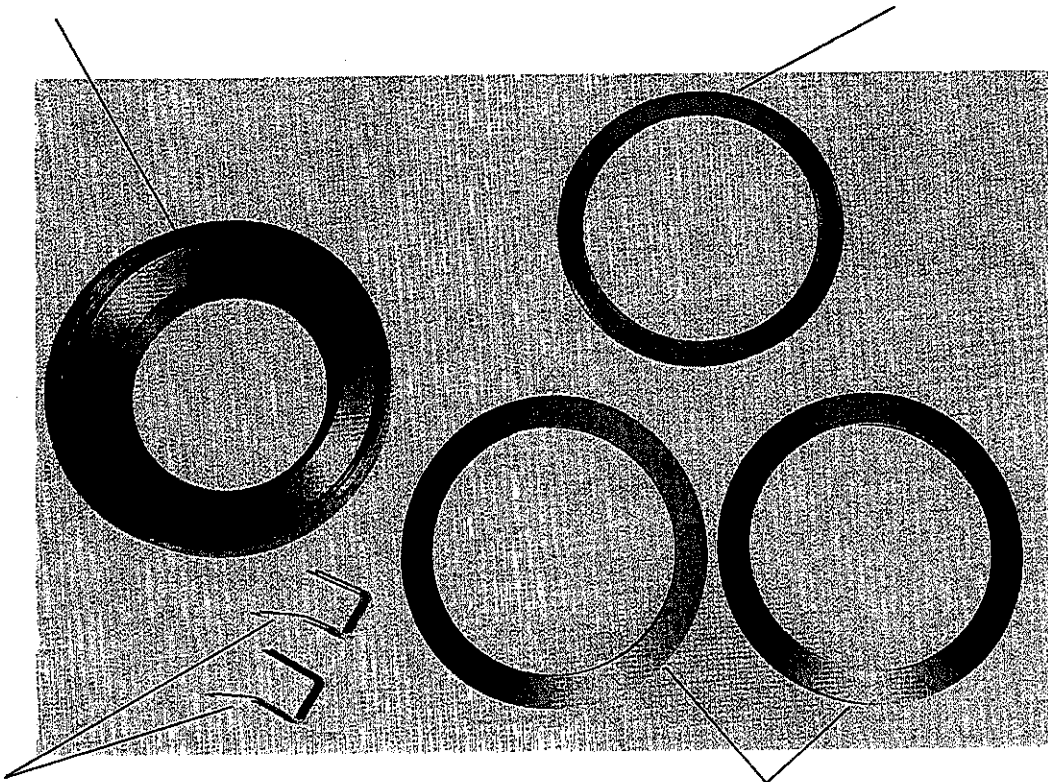
49A
664-49268
SUCTION VALVE PLATE (1)

49B
022-09743
SUCTION VALVE (1)
(VALVE RING)

CLIPS (2)
(OPTIONAL)
USER SUPPLIED
064-03447-000

49C
WAVE SPRINGS (2)
(WAVE RING)
222-09742-800 (Packs of 2)

28636A(R)

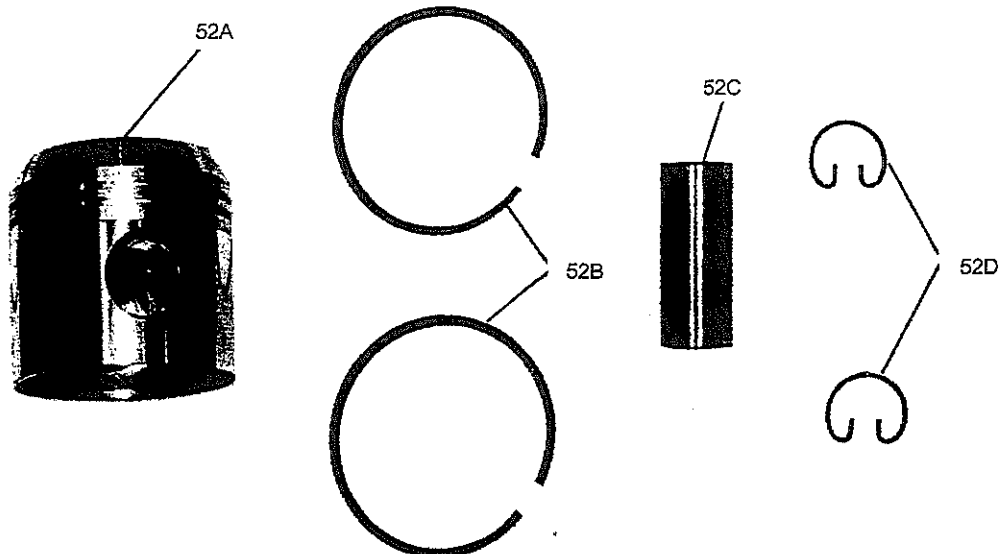


WAVE SPRING SUCTION VALVE ASSEMBLY 664-49291-000

ITEM NO.	DESCRIPTION	PART NUMBER
		WAVE ASS'Y
^s 49	Plate, Suction Valve Assembly Includes Items A, B, & C	664-49291-000
49A	Plate, Valve	664-49298-000 49268
49B	Ring, Suction Valve	022-09743-000
49C	Spring (Package of 2 Waves) No. Req'd. Per Valve Ass'y	222-09742-800 2 (Wave)

^s = Recommended Stock Spare Part

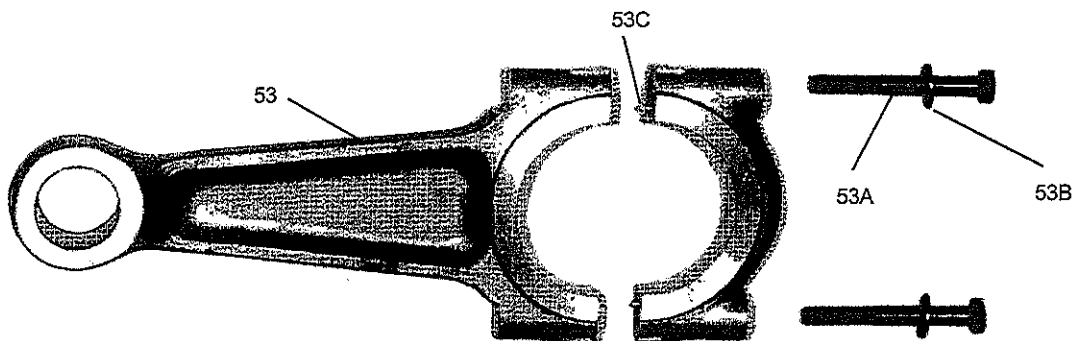
FIG. 6 - SUCTION VALVE PLATE ASSEMBLY



LD03066

ITEM NO.	DESCRIPTION	PART NUMBER
52	Piston Assembly Includes A, B, C, & D	3 64-46757-000
52A	Piston, Bare	064-46538-000
52B	Ring, Piston (2 Req'd. Per Piston)	029-15175-000
52C	Pin, Piston	029-13090-000
52D	Retainer (2 Req'd. Per Piston)	029-13091-000

FIG. 7 - PISTON ASSEMBLY

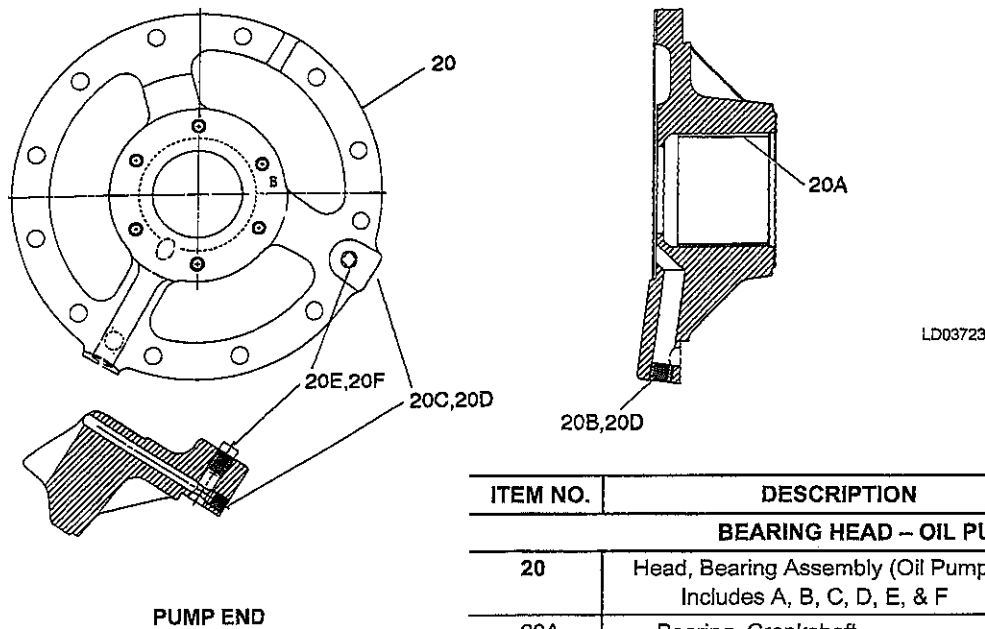


NOTE: NEW DRILLED RODS (Wrist Pin Lube) may be mixed w/ undrilled on R-22 applications only.

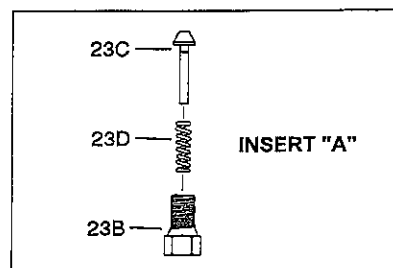
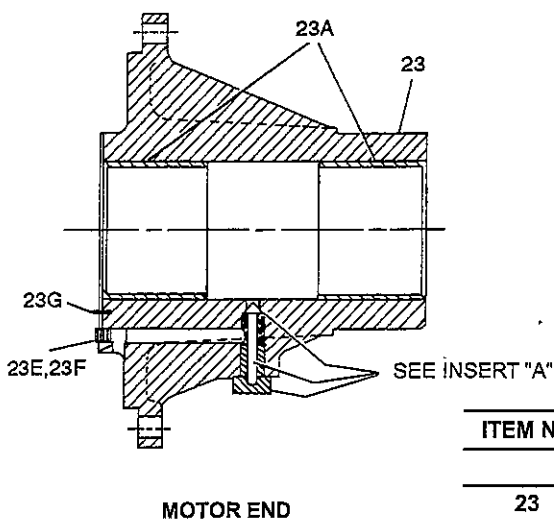
23369-2a

ITEM NO.	DESCRIPTION	PART NUMBER	
		SHORT STROKE	LONG STROKE
53	Connecting Rod Assembly (with Wrist Pin Lube Circuit required for POE Lubricants) Includes Items A, B, & C (Replaces Rod Assembly) (Undrilled)	3 664-49011-000 664-47256-000	3 664-49012-000 664-47257-000
53A	Screw, 5/16 Hex Cap No. Req'd. Per Connecting Rod	021-13665-000 2	021-13665-000 2
53B	Washer (Package of 10) No. Req'd. Per Connecting Rod	221-01262-800 2	221-01262-800 2
53C	Dowel Pin No. Req'd. Per Connecting Rod	029-19802-000 2	029-19802-000 2

FIG. 8 - CONNECTING ROD ASSEMBLY

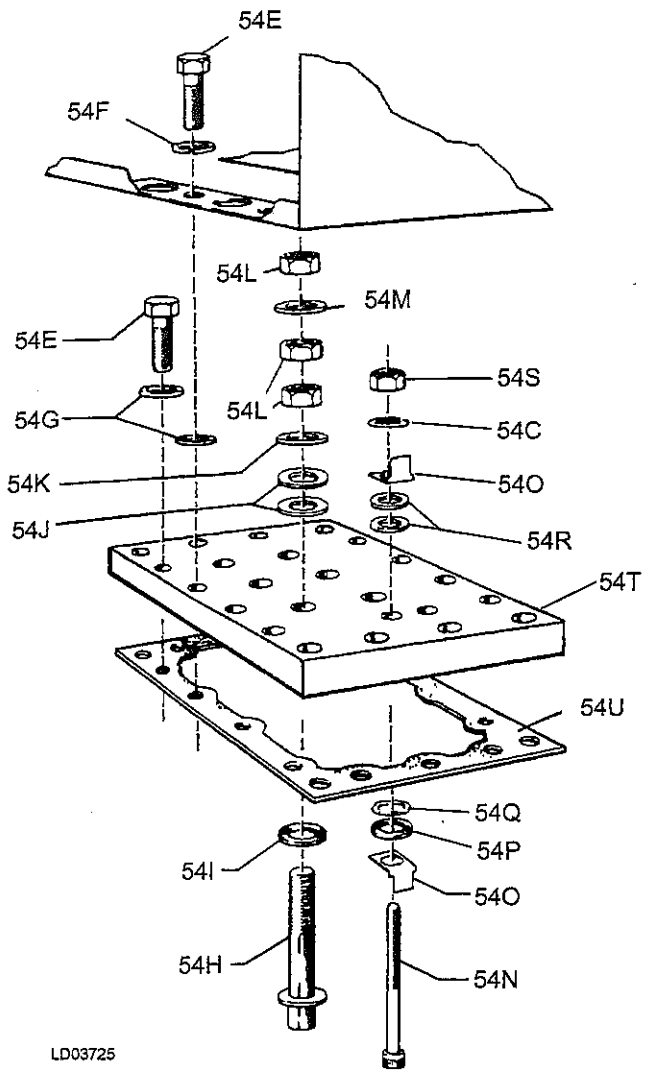


ITEM NO.	DESCRIPTION	PART NUMBER
BEARING HEAD – OIL PUMP END		
20	Head, Bearing Assembly (Oil Pump End) Includes A, B, C, D, E, & F	664-48188-000
20A	Bearing, Crankshaft	029-11097-000
20B	Pipe Plug, 3/8 Hex Socket	023-04298-000
20C	Pipe Plug, 1/8 Hex Socket	023-01970-000
20D	Sealer, Loctite Grade AVV (Use with Items 20B and 20C)	013-01671-000
20E	Pipe Plug, 1/4 Square Head	023-01972-000
20F	Sealer, Removable Thread (Use with Item 20E)	013-01678-000
—	Head, Bearing (Oil Pump End) (Does Not Include Items A, B, C, D, E & F)	064-48173-000

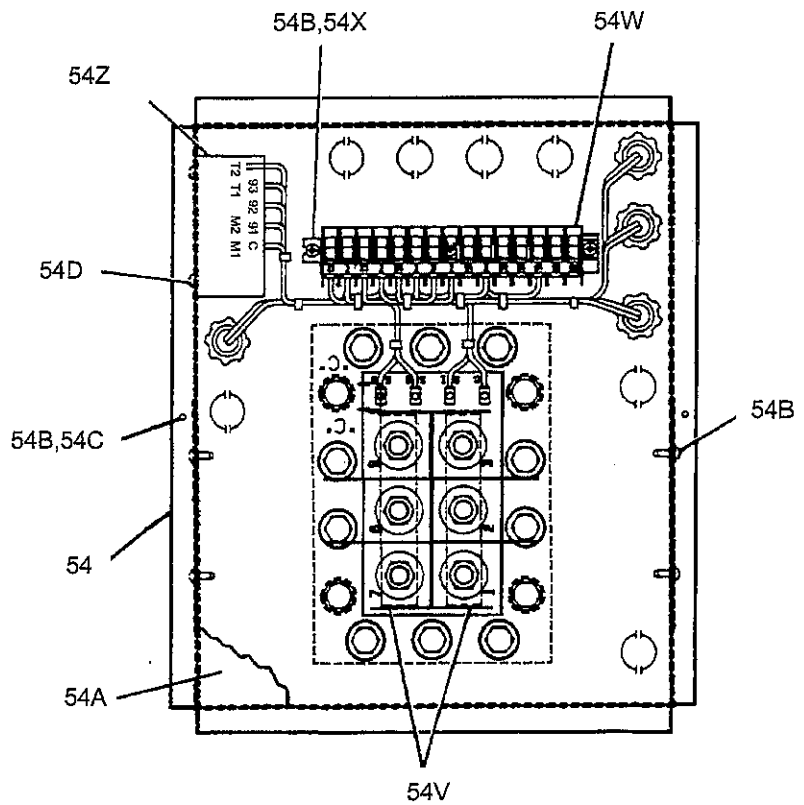


ITEM NO.	DESCRIPTION	PART NUMBER
BEARING HEAD – MOTOR END		
23	Head, Bearing Assembly (Motor End) Includes A, B, C, D, E, F & G	664-47221-000
23A	Bearing, Crankshaft (2 Required)	029-11097-000
23B	Cap, Seal, Oil Relief Valve (See Insert A)	065-06394-000
23C	Plunger, Oil Relief Valve (See Insert A)	065-01331-000
23D	Spring, Helical (See Insert A)	029-06143-000
23E	Plug, Pipe Flush Type Hex Socket	023-05366-000
23F	Sealer, Loctite Grade AVV (Use with Item 23E)	013-01671-000
23G	Pin, Slot 1/8 Spring	029-05395-000
—	Head, Bearing (Motor End) (Does Not Include Items A, B, C, D, E, F & G)	064-47220-000

FIG. 9 – BEARING HEADS



LD03725



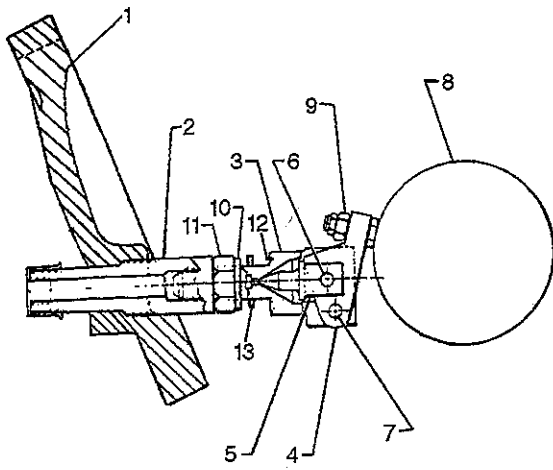
LD03726

FIG. 10 - TERMINAL BOX

ITEM NO.	DESCRIPTION	QUANTITY	PART NO.
54	Terminal Box	1	664-48175-000
54A	Cover, Terminal Box	1	064-47459-000
54B	Screw, Tap	9	021-13784-000
54C	Lockwasher, Internal Tooth	6	021-01133-000
54D	Screw, Pan Head	2	021-03743-000
54E	Screw, 3/8 Hex Flange	16	021-17691-000
54F	Lockwasher, 3/8 Internal Tooth	4	021-01155-000
54G	Washer, Plain, 7/16 ID x 1 OD	16	021-01267-000
54H	Bolt, Terminal	6	021-12696-000
54I	Gasket, Terminal Bolt, 13/16 OD	6	064-36151-000
54J	Washer, Terminal Bolt (Package of 10)	—	228-09410-800
	No. of Washers Req'd Per Compressor	12	
54K	Washer, Plain	6	021-17646-000
54L	Nut, 7/16 Hex (Package of 6)	—	221-12724-800
	No. of Nuts Req'd Per Compressor	18	
54M	Lockwasher, 7/16 Internal Tooth	6	021-16246-000
54N	Screw, Cap Hex Soc Hd (Package of 5)	—	221-14817-800
	No. of Screws Req'd. Per Compressor	4	
54O	Terminal, Overload	8	025-18650-000
54P	Washer, Plain, 3/16 ID (Package of 5)	—	221-01240-800
	No. of Washers Req'd. Per Compressor	4	
54Q	Seal, O-Ring, 5/32 ID	4	028-09347-000
54R	Washer, Terminal (Package of 10)	—	228-09525-000
	No. of Washers Req'd. Per Compressor	8	
54S	Nut, Hex, Machine Screw	4	021-08661-000
54T	Terminal Block	1	025-30402-000
54U	Gasket, Terminal Block	1	028-12557-000
54V	Spacer, Insulating	2	064-47346-000
54W	Terminal Block, Flat Base	See Table 1	025-20944-000
54X	Terminal Block End	1	025-20946-000
54Y	Bar, Jumper*	1	064-47424-000
54Z	Module, Motor Protector; Control Voltage:	1	
	24V		025-29939-000
	120V Dual Voltage, Auto Reset		025-32539-000
	240V Dual Voltage, Auto Reset		025-32539-000

* (Not Shown) Used in Across-the-Line Applications.

FIG. 10 – TERMINAL BOX (Cont'd.)



LD03067

FIG. 11 – CRANKCASE FLOAT

ITEM NO.	DESCRIPTION	PART NO.
	CRANKCASE FLOAT	364-26809-000
	Includes:	
	Float Assembly	364-45530-000
1	Cover, Handhole	364-26808-000
2	Adaptor	064-26807-000
3	Valve Body	064-45531-000
4	Lever, Float	068-04542-000
5	Valve, Float	068-04545-000
6	Pin, Valve	068-01594-000
7	Pin, Lever	064-02071-000
8	Ball, Float	022-00530-000
9	Nut-Hex Self-Locking (Pkg. of 5)	221-09610-800
10	Lockwasher	021-05273-000
11	Nut, Hex Jam (Package of 10)	221-08073-800
12	Pin, Roll (Package of 5)	229-08228-800
13	Gasket, Copper	028-03014-000

TABLE 2 – REPLACEMENT MOTORS (ROTORS & STATOR)¹

VOLTAGE	VOLT CODE	MOTOR SIZE CODE ²						
		M	N	P	Q	S	T	V
200-3-60	17	364-47924-001	364-47924-008	364-47924-015	364-47924-022	364-47924-029	—	—
230-3-60/190-3-50	28/59	364-47924-002	364-47924-009	364-47924-016	364-47924-023	364-47924-030	—	—
380-3-60	40	364-47924-003	364-47924-010	364-47924-017	364-47924-024	364-47924-031	364-47924-039	364-47924-047
460-3-60/380/415-3-50	46/50	364-47924-004	364-47924-011	364-47924-018	364-47924-025	364-47924-032	364-47924-040	364-47924-048
575-3-60/500-3-50	58/70	364-47924-005	364-47924-012	364-47924-019	364-47924-026	364-47924-033	364-47924-041	364-47924-049
220-3-50	63	364-47924-006	364-47924-013	364-47924-020	364-47924-027	364-47924-034	—	—
440-3-50	43	364-47924-007	364-47924-014	364-47924-021	364-47924-028	364-47924-035	364-47924-043	364-47924-051
346-3-50	64	364-47924-101	364-47924-102	364-47924-103	364-47924-104	364-47924-105	364-47924-106	364-47924-107

NOTES:

- As Indicated by sixth digit of model. Replacement motor must be the same size code and voltage code as the original motor. Rotors and stators are not available separately. Replacement motors include Item 54H, Fig. 10, Page 13.)
- The unused protector leads should be cut off in the area where they exit the bundle. They should be cut off at different lengths (approximately 1/4" difference) to prevent the bare ends from touching one another. The remaining portion of the unused protector leads must then be ty-rapped rigidly to the stator coils to prevent the exposed ends from touching any other component.

**YORK REMANUFACTURED COMPRESSORS ARE AVAILABLE FROM
 THE YORK REMANUFACTURING FACILITY IN
 WHEELING, ILLINOIS. FOR PRICES AND/OR AVAILABILITY,
 CALL 1-800-537-9675 OR FAX 1-708-541-0943.
 FOR AFTER HOURS EMERGENCY SERVICE,
 CALL 1-708-541-9466**

TABLE 3 – SERVICE AIDS

GASKET KIT** COMPRESSOR MODEL			VALVE RETAINING CLIP	BEARING REMOVAL TOOL	ROTOR MANDREL*	STATOR REMOVAL TOOL
4 CYLINDER	6 CYLINDER	8 CYLINDER				
364-48642	364-48643	364-48644	064-37274	364-37260	364-37273	029-13597

* Screws Into End of Crankshaft to Aid in Removing / Installing Rotor

** Depending on application, not all gaskets may be required.

TOP HEAD "VALVE REPLACEMENT" KITS & TOP HEAD "OVERHAUL" KITS

The price of the kits shown below is less than the total price of the individual parts. These kits provide a convenient, economical method of ordering replacement parts.

Each Top Head "Valve Replacement" Kit listed in Table 4 contains the suction and discharge valves, springs, gaskets, screws and nuts that are recommended to be replaced when a valve replacement is required.

Each Top Head "Overhaul" Kit listed in Table 5 contains the suction valves, suction springs, suction valve plates, discharge valve cage assemblies, gaskets, bolts and lockwashers that are recommended to be replaced when a top head overhaul is necessary.

Each kit has all of the recommended parts to service the valves located under one head (2 cylinders per head) for each compressor listed.

A threaded torque value table is included with each kit.

If servicing a complete compressor, order the quantities as listed in the table.

Valve replacement should be done annually or every 5,000 hours of running time. Depending on application, all gaskets may not be required that come in the kits.

TABLE 4 – TOP HEAD "VALVE REPLACEMENT" KIT

KIT PART NO.	364-47667-010, COIL*		
	NO. OF KITS REQUIRED PER COMPRESSOR		
EACH KIT CONTAINS (Parts for 2 cylinders)	4 CYL	6 CYL	8 CYL
Suction Valve	2	3	4
Discharge Valve			
Suction Valve Springs			
Discharge Valve Springs			
Top Head Gasket			
Discharge Manifold Gasket			

* Order parts separately for Wave Spring Replacements. See page 8.

TABLE 5 – TOP HEAD "OVERHAUL" KIT

KIT PART NO.	364-47666-020, WAVE		
	NO. OF KITS REQUIRED PER COMPRESSOR		
EACH KIT CONTAINS (Parts for 2 cylinders)	4 CYL	6 CYL	8 CYL
Suction Valve, Plate & Spgs.	2	3	4
Dschg. Valve Cage Assmby			
Top Head Gasket			
Discharge Manifold Gasket			